

Pathways to Inclusion

4th IASSIDD Europe Congress



Congress Program

14 - 18 July 2014

University of Vienna, Austria



universität
wien



lebenshilfe
ÖSTERREICH

4th IASSIDD Europe Congress acknowledges the support and sponsorship received from:

City of Vienna

Star Alliance

Botanical Garden, University of Vienna & Faculty of Life Sciences, University of Vienna

Lebenshilfe Österreich

IASSIDD

University of Vienna

Faculty of Psychology, University of Vienna

Research Center Human Rights, University of Vienna

Vienna Convention Bureau

StaDt  Wien

STAR ALLIANCE
THE WAY THE EARTH CONNECTS



Botanischer Garten
Universität Wien



universität
wien

Fakultät für Lebenswissenschaften

VIENNA
CONVENTION BUREAU

lebenshilfe
ÖSTERREICH



universität
wien

Fakultät für Psychologie

**4th IASSIDD
Europe Congress
Pathways to Inclusion**

**Vienna, Austria
July, 14th – 18th, 2014**

**University of Vienna
Universitätsring 1
1010 Wien**

CONGRESS PROGRAM

**UNDER THE PATRONAGE OF
DR. HEINZ FISCHER
PRESIDENT OF THE REPUBLIC OF AUSTRIA**

**4th IASSIDD Europe Congress was organized by
The Faculty of Psychology of the University of Vienna
Joint Programming with IASSIDD and Lebenshilfe Österreich**

Local Organization Committee

Weber Germain, Chair, Faculty of Psychology, University of Vienna, Austria
Lueger-Schuster Brigitte, Co-Chair, Faculty of Psychology, University of Vienna, Austria
Kocman Andreas, Faculty of Psychology, University of Vienna, Austria
Engländer Simone, Faculty of Psychology, University of Vienna, Austria
Dietrich Herbert, Faculty of Psychology, University of Vienna, Austria
Maxian Sabine, Faculty of Psychology, University of Vienna, Austria

Brandstätter Albert, Lebenshilfe Österreich, Austria
Schrammel Eva, Lebenshilfe Österreich, Austria
Heindl Claudia, Lebenshilfe Österreich, Austria
Birgit Mondl, Lebenshilfe Österreich, Austria

Event Management of the University of Vienna, Austria
Press Office of the University of Vienna, Austria

Special thanks to:

Samantha Ehli, Faculty of Psychology, University of Vienna, Austria
Anna Kofler, Faculty of Psychology, University of Vienna, Austria

International Program Committee

Weber Germain, Chair, University of Vienna, Austria
Timmons Vianne, IASSIDD President, University of Regina, Canada
McConkey Roy, IASSIDD Academy, University of Ulster, Belfast, N. Ireland
Emerson Eric, Lancaster University, UK
Maes Bea, Catholic University of Leuven, Belgium
Murphy Glynis, University of Kent, Canterbury, UK
Ouellette-Kuntz Helene, Queen's University, Ontario, Canada
McDonald Maureen, Queen's University, Ontario, Canada
Fea Fabrizio, Associazione Scuola Viva Onlus, Rome, Italy

Local Advisory Board

Buchner Tobias, Faculty of Philosophy and Education, University of Vienna, Austria
König Oliver, Faculty of Philosophy and Education, University of Vienna, Austria
Dinold Maria, Centre for Sport Science and University Sports, University of Vienna, Austria
Brehmer-Rinderer Barbara, Faculty of Psychology, University of Vienna, Austria
Zeilinger Elisabeth, Faculty of Psychology, University of Vienna, Austria
Brandstetter Friedrich, Vienna Social Support Services, Center for Developmental Support & Enhancement, Austria



**universität
wien**



lebenshilfe
ÖSTERREICH

Welcome	4
The Rector of the University of Vienna, Heinz W. Engl	4
Federal Minister of Labor, Social Affairs and Consumer Protection, Rudolf Hundstorfer	4
IASSIDD President, Vianne Timmons	6
Local Organization President, Germain Weber	6
General Information	8
Registration	8
Business Center	8
Wardrobe	8
Nutrition Brakes	8
Emergency Numbers	8
Medical Information	8
Congress Language / Simultaneous Translation	8
Our Goal for the Inclusion Track	8
Locations & Conference Rooms	9
The Programm Book	10
Poster Sessions	11
Business Meetings	12
Monday, 14th July	13
Pre-Congress Workshops	13
Opening	14
Tuesday, 15th July	15
Wednesday, 16th July	33
Thursday, 17th July	46
Practical Information	61
Instructions for Presenters	61
Arrival on the Airport	62
Austrian Area Code	62
Mobile Phones	62
Name Badge	62
Public Transport	62
Registration & Information Desk	62
Social Programm	62
Restaurants	62
Taxi Information	62
Pharmacies	62
Other Activities	63
Internet Access Guide	64
Maps	65

Welcome

The Rector of University of Vienna Prof. Dr. Dr. Heinz W. Engl

As Rector of the University of Vienna I am delighted to welcome the 4th IASSIDD 2014 Europe Regional Congress in Vienna under the overall theme "Pathways to Inclusion".

The IASSDD Europe Congress, organized jointly by The International Association for the Scientific Study of Intellectual and Developmental Disabilities, the University of Vienna and Lebenshilfe Austria, is giving people with intellectual disability the opportunity to actively participate and besides is the largest European Congress that deals with this topic. The Congress focuses on how people with intellectual disability can be integrated and – above all - included into society and therefore follows a structure closely linked to the UN Convention on the Rights of People with Disabilities (CRPD).

This topics are extremely relevant not only from a scientific, academic but also from a social point of view. Inclusion is also a topic in connection with our current teacher's education

Curriculum. The IASSIDD Congress will offer about 600 presentations, debates, Round Tables and Keynotes and will at the same time support the participation of people with intellectual disability. As an example for a network of theoretical and practical approaches the Congress will lead to a broader public discussion and innovation in the field of intellectual disability and as Rector I am pleased that the University of Vienna is hosting.

(Photo © University of Vienna)



Federal Minister of Labor, Social Affairs and Consumer Protection Rudolf Hundstorfer

Ladies and Gentlemen,

The fourth IASSIDD Conference this year is dedicated to the theme of 'Pathways to Inclusion'. This theme of inclusion, which has to be put in a far broader context than only the aspect of people with disabilities, was also the topic of the symposium on disability policy organised by the Ministry of Social Affairs to mark Austria's Presidency of the Council of Europe. 'Human Rights and Disability' was the title of our event, which consciously focused on the human rights aspect.

As the host, I would like to take the opportunity to inform you about important steps which have taken place in Austrian disability policy since the coming into effect of the UN Convention on the Rights of Persons with Disabilities.

As one of the first states, Austria ratified the Convention including the Optional Protocol in autumn 2008, and in 2010 it submitted its first country report to the United Nations on the implementation of the UN Disability Rights Convention. Today, over 140 states have ratified the Convention.

As a consequence of the important inputs of civil society groups, we drew up a National Action Plan on Disability 2012-2020 in Austria. It contains the guidelines for disability policy for the current decade. The motto of the NAP Disability is 'Inclusion as a Human Right and a Mandate'.

To achieve this purpose, in my opinion it is meaningful and necessary to draw up disability policy objectives and measures and also to create a political consensus on them. A plan of action which covers several years and contains a strategy creates the conditions under which political participation, transparency, predictability and further development are possible, and is thus in the interests of all of us.

Specifically, the federal government has adopted 250 measures with corresponding timelines and responsibilities in the National Action Plan on Disability. For their implementation I have established an advisory group including representatives of all the ministries, the provinces, the social partners, the scientific community, the organisations of people with disabilities, the Monitoring Committee and the Federal Disability Ombudsman. By adopting a resolution on this National Action Plan on Disability, the Austrian federal government made a clear commitment to inclusion in the field of disabilities. Society benefits from diversity and the people who contribute towards this diversity deserve our appreciation and recognition. This can only take place by means of a process such as that which I have described here, which has already begun in many areas and at the heart of which is the development of new structures and a change of strategies.

In relation to the question of how 'real' inclusion in the field of disabilities can be achieved, let me list three preconditions in terms of social policy which are fundamental in my view:

In order to realise inclusion, effective protection against discrimination is required!

In this sense, Austria took an essential step forward with the legislation on disability equality which was adopted in 2006. An evaluation which was carried out recently showed that this protection against discrimination is viewed very positively. At the same time, however, proposals for improvements – particularly the creation of the entitlement to sue for elimination or to take out an injunction, and the improvement of class actions – have been introduced. We are working on them! In addition, inclusion is unthinkable without the creation of accessibility. The participation of people with disabilities in society



on an equal footing can only succeed when barriers are eliminated – and that not only means physical and technical barriers, but also the barriers in our heads. Even though accessibility has become a public issue thanks to the legislation on disability equality, there is still a lot to do in this field. An especially important element in the concept of inclusion is the added value created by accessibility. Mothers with prams, and children and older people benefit from an environment which is barrier-free to the same extent as people with disabilities do. As I am also the Minister for Senior Citizens, I consider this added value provided by accessibility to be of particular importance.

Finally, a sign of an inclusive society is the participation of people in society and thus the maintenance of an open and constructive dialogue. In Austria, this transformation towards the equal participation of people with disabilities has recently been stepped up – as I have shown – by the development of the National Action Plan on Disability

We view the realisation of inclusion in Austria as a process which also contains a strong involvement of civil society, which it learns from and which takes action as a result.

There is always room for improvements. Let us be open for new proposals. An international and forward-looking event like this one today is one of the best opportunities to promote such exchanges of experience.

Bundesminister für Arbeit, Soziales und Konsumentenschutz

Rudolf Hundstorfer

Welcome

IASSID President Dr. Vianne Timmons

On behalf of the International Association for the Scientific Study of Intellectual and Developmental Disabilities, I would like to say how pleased I am that the 4th IASSIDD Europe Regional Congress is taking place in Vienna, Austria in July, 2014.



The Congress theme – “Pathways to Inclusion” – fits very well with IASSIDD’s mandate as the world’s premiere association for research on disabilities. Our goal as an organization is to conduct, share and promote research that helps improve the lives of persons with intellectual and related developmental disabilities, and gatherings like the IASSID Europe Regional Congress are critical means of fulfilling that objective.

The Congress will be an important professional opportunity, providing a forum for networking and learning about trend-setting research. Participants will share with one another their work, best practices, and lessons learned, and our fabulous slate of speakers from all over the world will inspire and motivate all of us with their innovative ideas and varied perspectives on disability and inclusion.

I look forward to seeing you there!

A handwritten signature in cursive script that reads "Vianne Timmons".

Dr. Vianne Timmons
IASSIDD President, 2012-2016

Chair of the Local Organization Committee Dr. Germain Weber

On behalf of the IASSIDD, the University of Vienna and the Lebenshilfe Austria, I am delighted to invite you all to the 4th IASSIDD Europe Congress in Vienna.

Under the overall theme “Pathways to Inclusion”, the congress will focus on current advances in research covering the latest findings in basic, applied and participative research strategies. Besides the traditional settings for research presentation and debates, the delegates will enjoy the opportunity to experience a set of inclusive sessions and discussions with the participation of prominent self-advocates, researchers, policy makers and leaders in the field. Researchers are invited to these inclusive settings to share their knowledge with self-advocates, and self-advocates will inspire researchers with their reflections and views for developing the next research agendas, meaningful for the life of people with intellectual and developmental disabilities. The congress program is shaped along major themes as expressed in the UN Convention on the Rights of People with Disabilities. During these days the delegates will experience a manifold of opportunities with significant exchanges and essential debates, thus creating spaces to generate new ideas for user-inspired next innovations in research as well as encourage the delegates through these findings for meaningful and sustainable next steps when developing our inclusive societies.



I am looking forward to welcoming many of you in July 2014.

A handwritten signature in cursive script that reads "Germain Weber".

Dr. Germain Weber
Dean Faculty of Psychology University of Vienna

General InformationPage 8-12

Monday, 14th JulyPage 13-14

Tuesday, 15th JulyPage 15-31

Wednesday, 16th JulyPage 33-45

Thursday, 17th JulyPage 46-60

Practical Information.....Page 61-70

General Information

Registration

Registration will take place in the lobby (LO) of the University of Vienna.
Please find the exact opening hours below:

Monday, 14 th July	08:00-17:30
Tuesday, 15 th July	08:00-19:00
Wednesday, 16 th July	08:00-19:00
Thursday, 17 th July	08:00-19:00

Business Centre

The Business Center is located in the 1st Floor of the main Building of the University (see the map on page 65). During the regular congress days it is open from 9:00 - 15:00. At the Business Center you can check your presentations or print any important documents up to 5 pages (for example your boarding pass).

Wardrobe

The wardrobe is located at the first floor in the main building next to the "Großer Festsaal" (GF). Please note that we assume no liability for any losses.

Nutrition Breaks

During breaks coffee, tea, water, apple juice, orange juice and dry snacks are included in the registration fee. Please make sure that you wear your name badge to avoid any misunderstandings. Additional food can be purchased on site. The congress cafeteria is located in the "Großer Festsaal" (GF) and according to the weather conditions in the Arcades (ARK).

Emergency Numbers in Austria

Fire brigade	122
Ambulance Service	144
Police	133

European Emergency Number: 112

Medical Information

Closest Hospital:
AKH Wien (Vienna General Hospital)
Währinger Gürtel 18-20, 1090 Wien
+34(0)1 404000

Congress Language / Simultaneous Translation

Congress language is English and German. Simultaneous translation will be offered for keynotes and all sessions of the inclusion track, where easy language will be the standard.

Our Goal for the Inclusion Track

Primary goal of sessions of the inclusion tracks is to provide a framework that further deepens the possibility of participation of people with intellectual disability in all topics of the congress by providing further information in easy language on keynotes and the central themes and tracks of the congress.

The track's secondary aim is to foster and deepen not only exchange between self advocates in Europe but also all stakeholder groups in ID research: self advocates, researchers, family members and professionals supporting people with ID with several round tables in the course of the congress.

The program of the inclusion track, unlike the other tracks, is focused on one specific topic each day:

15.7.2014:	Supported decision making
16.7.2014:	Inclusion in the workplace
17.7.2014:	Community-based living

Locations & Conference Rooms

University of Vienna (Main Building; MB)

Universitätsring 1
1010 Wien

Code	Room
AM	Auditorium Maximum (Audimax)
ARK	Arkaden (Arcades)
LO	Lobby of the University
BL	Business Lounge
ERS	Elise-Richter-Saal
GF	Großer Festsaal
KF	Kleiner Festsaal
MBS	Mariette-Blau-Saal
PZ	Prominentenzimmer
CR2	Sitzungssaal 2
SEN	Senatssitzungssaal
HS16	Hörsaal 16

Code	Room
HS23	Hörsaal 23
HS27	Hörsaal 27
HS28	Hörsaal 28
HS29	Hörsaal 29
HS30	Hörsaal 30
HS31	Hörsaal 31
HS32	Hörsaal 32
HS33	Hörsaal 33
HS34	Hörsaal 34
HS7	Hörsaal 7
HS21	Hörsaal 21

NIG Building (NIG)

Universitätsstraße 7
1010 Wien

Code	Room
HS A	Hörsaal A
HS B	Hörsaal B
HS C	Hörsaal C

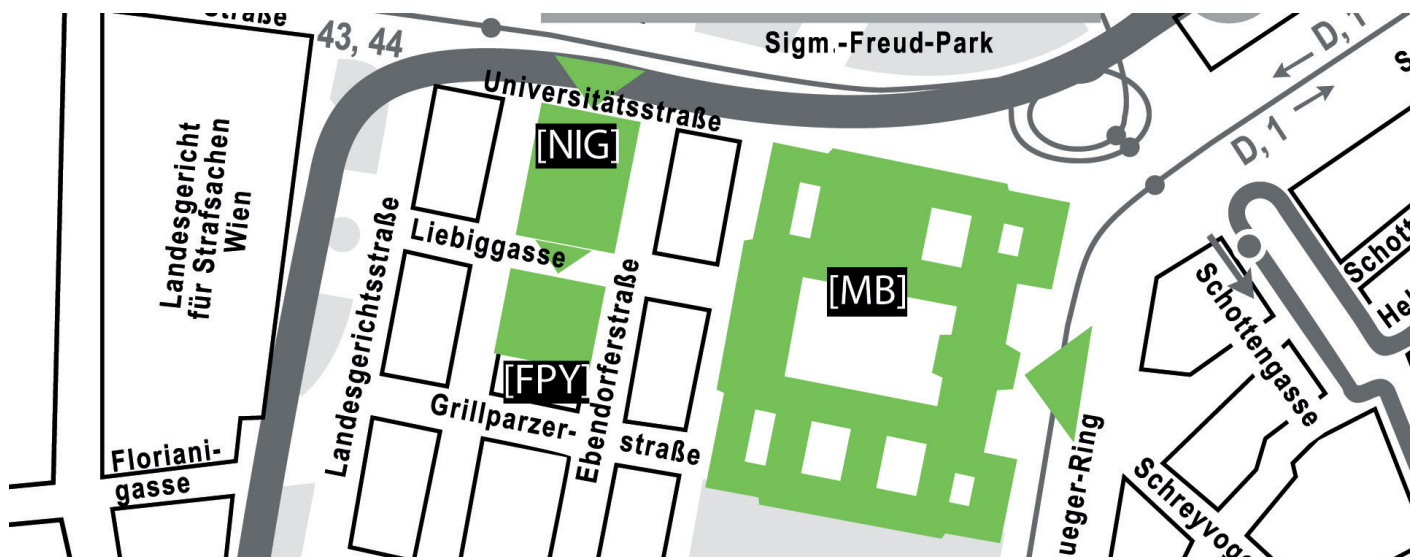
Code	Room
HS D	Hörsaal D
HS PC	PC - Room

Faculty of Psychology (FPY)

Liebiggasse 5
1010 Wien

Code	Room
HS E	Hörsaal E
HS F	Hörsaal F

Code	Room
FS	Fakultätssitzungssaal



The Program Book

Congress Themes

Every presentation in the congress is represented by a theme. Themes of the symposia are represented by codes. The following table shows all codes.

Code	Congress Theme
EDU	Education
HEALTH	General Health and Specific Health Issues
LAW	Law and Liberty of the Person
LIV	Living in the Community
PART	Participation over the Lifespan
W & E	Work and Education
INC	Inclusion

Code	Congress Type
D	Demonstration
INC	Inclusive Presentation
I RT	Inclusive Round Table
KN DEBRIEFING	Keynote Debriefing
RT	Round Table
S	Symposium

Daily Program

The daily schedule starts with a global overview of the day, followed by a detailed chronological list of the daily events. Sessions are all scheduled to run 90 minutes, with individual presentations being scheduled for 15 minutes each, followed by a 5 minutes question and answer slot.

10:00-11:30	→ Daytime
AM	→ Room
1.1 HEALTH	→ Session title & number; Moderator
Moderator:	
Understanding the potential of pre-diabetes screening to predict future type 2 diabetes among people with ID. (p.) MC CALLION, Philip	→ First presentation in the session, showing title of the presentation, author and page of JARID on which the abstract can be found
A study protocol for a pilot RCT of a structured education Program (DESMOND-ID) for adults with ID and Type 2 diabetes T2D (p.) TAGGART, Laurence	→ Second presentation in the session, showing title of the presentation, author and page of JARID on which the abstract can be found
Type 2 Diabetes (T2D) education for adults with ID (p.) TRUESDALE-KENNEDY, Maria	→ Third presentation in the session, showing title of the presentation, author and page of JARID on which the abstract can be found
The view and experiences of professionals caring for adults with ID and type 2 diabetes. (p.) BROWN, Michael	→ Fourth presentation in the session, showing title of the presentation, author and page of JARID on which the abstract can be found

→ Sessions of the inclusion track are marked in grey

Poster Sessions

The poster sessions will take place in the Arcades from Tuesday to Thursday. The following table shows an overview of the three poster sessions.

Date	Time	Theme
Tuesday, 15 th July	14:00 – 15:00	HEALTH
Wednesday, 16 th July	14:00 – 15:00	LIV; PART
Thursday, 17 th July	13:30 – 14:30	W & E; EDU

You will find a table with all the poster presentations of a day at the end of each day's chapter.

Business Meetings

Monday, 14th July

Time	Room	Theme
8:30 – 16:00	SEN	Exectuvie Meeting

Tuesday, 15th July

Time	Room	Theme
10:30 – 12:00	HS E & HS F	SIRG Down Syndrome: Members' Business Meeting
12:00 – 13:30	HS E & HS F	World-Congress Melbourne 2016: SAC Meeting
13:30 – 15:00	CR2	SIRG Families: Members' Business Meeting
	HS E & HS F	Perspectives on the Future Role of Registered Nurses in ID: Working Group Meeting
	FS	SIRG Aging and Intellectual Disability: Members' Business Meeting
	HS C	SIRG Profound Intellectual and Multiple Disabilities: Members' Business Meeting
16:00 – 18:00	CR2	JIDR: Editorial Board Meeting

Wednesday, 16th July

Time	Room	Theme
10:30 – 12:00	CR2	Education: Working Group Meeting
	FS	Academy Board Meeting
12:00 – 13:30	CR2	World-Congress Melbourne 2016: Program Committee Meeting
13:30 – 15:00	MBS	SIRG Ethics & Intellectual Disability: Members' Business Meeting
	HS E & HS F	International PhD Students in Intellectual Disability Exchange: Working Group Meeting
	FS	SIRG Challenging Behavior and Mental Health: Members' Business Meeting
	HS C	SIRG Health Issues: Members' Business Meeting
15:30-17:00	CR2	Sexuality and Intellectual Disability: Working Group Meeting
16:30-18:00	HS E & HS F	Mortality in People with Intellectual Disabilities: Working Group Meeting
	FS	Journal of Policy and Practice in Intellectual Disability: Editorial Board Meeting

Thursday, 17th July

Time	Room	Theme
10:30 – 12:00	HS E & HS F	SIRG Quality of Life: Members' Business Meeting
12:00 – 13:30	HS E & HS F	SIRG Co-Ordinating Committee: Members' Business Meeting
13:00 – 15:00	CR2	World-Congress Melbourne 2016: LOC Meeting
13:30 – 15:00	FS	SIRG Parenting with Intellectual Disability: Members' Business Meeting
	HS E & HS F	SIRG Comparative Policy and Practice: Members' Business Meeting
16:30 – 18:00	HS E & HS F	SIRG "Inclusive Educational Practices": Foundation Meeting

Friday, 18th July

Time	Room	Theme
9:30 – 15:30	SEN	Council Meeting

09:00-12:00			
HS16	HS30	HS C	HS D
Workshop: Strategies for Implementing National Strategies for Aiding People with Intellectual Disabilities Affected by Dementia JANICKI, Matthew KELLER, Seth LUCCHINO, Ronald WATCHMAN, Karen Language: English	Workshop: The Other 23 Hours: Enabling Environments in Intellectual Disability CLEGG, Jennifer Language: English	Workshop: Ageing and Intellectual Disability: Developing web based training Program for frontline staff working with older people with intellectual disabilities De WINTER, Ann RAGHAVAN, Raghu Language: English	Workshop: Transition to Retirement: A Guide to Inclusive Practice STANCLIFFE, Roger WILSON, Nathan Language: English

09:00-16:30			
HS E/F	HS A	HS B	PZ
Workshop: People with Intellectual Disabilities as Suspects and Offenders MURPHY, Glynis MC CARTHY, Jane WOOD, George LANGDON, Peter Language: English	Workshop: New Paths to InclUision: Theory-U, Person-Centred Planning and Transformative Systems Change KOENIG, Oliver Language: Bilingual	Workshop: Education for Learners with Intellectual Disabilities: Teaching Strategies for Improving Quality of Life FARAGHER, Rhonda Language: English	Workshop: Einführung in die Kongressthemen Workshop für SelbstvertreterInnen (Introduction to the congress themes Workshop for self-advocats) CAPITO Language: German

13:30-16:30			
HS16	HS30	HS C	HS D
Workshop: Diagnosing Autism Spectrum Disorders in adults with Intellectual Disabilities SAPPOK, Tanja BERGMANN, Thomas Language: English	Workshop: Shaping Research to Practice for Low and Middle Income Countries: Learning from Experience and Developing New Pathways BROWN, Roy PARMENTER, Trevor Language: English	Workshop: Using a Quality of Life Approach with Individuals with Disabilities and Their Families: What works to enhance life quality? BROWN, Ivan SCHIPPERS, Alice CROCE, Luigi Language: English	Workshop: A Comprehensive Approach to Health and Health Care for People with Intellectual Disabilities as They Age MCCALLION, Philip MCCARRON, Mary Language: English

For more information about the workshops please visit:

<http://iassidd2014.univie.ac.at/participate/pre-congress-workshops/>

On-site registration for the workshops is possible at the registration desk.

17:00-19:00

Opening Ceremony (Location: AM)

19:00-20:00

Welcome Drink (Location: ARK)

Accessible information

capito®

makes information easy to understand
improves information
and tests information



Contact us: www.capito.eu



Time	Event
08:00 – 19:00	Conference Registration, <i>Location: LO</i>
09:00 – 09:45	Keynote Speaker: Dr. Marianne Schulze; <i>Location: AM</i>
10:00 – 13:30	Symposia Presentations
13:30 – 15:00	Lunch Break
14:00 – 15:00	Poster Session: HEALTH; <i>Location: ARK</i>
15:00 – 15:45	Keynote Speaker: Timothy P. Shriver; <i>Location: AM</i>
16:00 – 19:15	Symposia Presentations
20:00	Reception at the City Hall (for all congress delegates, bring your invitation card included in your bag along)

09:00-09:45
Keynote Speaker: Dr. Marianne Schulze Supported decision-making: for prime ministers only? Location: AM (p. 289)

09:45-10:00
Break

10:00-19:15
AGID Dissemination Location: HS PC

10:00-11:30				
AM	HS33	HS34	HS7	HS31
1.5 PART Moderator: Bea Maes	1.1 PART Moderator: Matt Janicki	1.9 HEALTH Moderator: Arturo Langa	1.1 EDU Moderator: Jean Ware	1.1 LIV Moderator: Julie Beadle-Brown
Engineering change in the culture and practices of a service for people with intellectual disability (p. 359) GRIFFITHS, Colin	Sharing the diagnosis of dementia: breaking bad news to people with intellectual disabilities (p. 357) TUFFREY-WIJNE, Irene	Intellectual ability and adaptive functioning in individuals with fetal alcohol spectrum disorder: are they related? (p. 301) KERNS, Kimberly	Exploring quantity perception and non-symbolic number representation in adults with PIMD (p. 291) CHARD, Mélissa	A quick tour of institutions and community-based services in North America (p. 339) COBIGO, Virginie
Evaluating quality of life and subjective wellbeing in children with PIMD (p. 359) MAES, Bea	Why's my friend doing that? Raising awareness of dementia in adults with ID using computers. (p.357) WAIGHT, Mary	Adolescents with fetal alcohol spectrum disorder getting to graduation: inclusive education in action (p. 301) PEI, Jacqueline	Realization of Education in Care/Nursing in daycare center for persons with PIMD (p. 291) CHEN, Nan-chieh	Current trends on community living in the Nordic countries (p. 339) TØSSEBRO, Jan
The practical use of Video Interaction Guidance to improve communication, interactions and knowledge transfer between people with PIMD, staff and family members. (p. 359) PHILLIP, Maureen	Strategies to reduce the marginalization of people with intellectual disabilities and dementia (p.357) WATCHMAN, Karen	Process specific interventions in children with fetal alcohol spectrum disorder: inclusive education in action (p. 302) KERNS, Kimberly	Do press rates show progress towards contingency awareness for people with PIMD? (p. 291) THORPE, Peter	Current Research Findings on Adults with ID in Taiwan: Comprehensive Review and Future Direction (p. 339) WANG, Kuoyu (Lisa)
	Screening for Dementia: A Feasibility Study of the NTG-EDSD in German-language (p.357) ZEILINGER, Elisabeth	Mathematics Intervention for Children with Fetal Alcohol Spectrum Disorder (p. 302) PEI, Jacqueline	Effectiveness and Sustainability of interventions designed to enhance the quality of interactions between staff and people with Profound Intellectual and Multiple Disabilities (PIMD): a systematic review of the literature. (p. 291) WARE, Jean	Community Living in Australia and the UK - three steps forward, two steps back? (p. 339) BIGBY, Christine

10:00-11:30				
HS32	ERS	HS23	HS27	HS28
1.1 HEALTH Moderator: Philip McCallion	1.5 LIV Moderator: Ivan Brown	1.1 LAW Moderator: Hans Reinders	1.1 W & E Moderator: Colleen Adnams	1.5 HEALTH Moderator: James Hogg
The view and experiences of professionals caring for adults with intellectual disabilities and type 2 diabetes (p. 297) BROWN, Michael	Quality of communication support for people with intellectual and developmental disabilities living in supported accommodation settings (p. 341) BRADSHAW, Jill	Swedish legislation on restraints in community services for people with ID (p. 330) BJÖRNE, Petra	Supported work experience and its impact on young people with intellectual disabilities and their families. (p. 372) BEYER, Stephen	Exploring responses to bereavement and loss with people with profound intellectual and multiple disabilities using cultural resources (p. 299) FORNEFELD, Barbara
Understanding the potential of pre-diabetes screening to predict future type 2 diabetes among people with intellectual disabilities (p. 297) MCCALLION, Philip	Developing positive relationships for adults with severe and profound intellectual disabilities (p. 341) JOHNSON, Hilary	Using and reducing restrictive measures in adolescents with mild intellectual disabilities; a survey among staff members (p. 330) DÖRENBERG, Vivianne	Age peer supported work experience and apprenticeship and their impact on young people with intellectual disabilities, peers and employers (p. 372) DAVIES, Amy	Creation of a Bereavement Learning Resource and the benefits of collaborative working in this process (p. 299) LAMBE, Loretto
A study protocol for a pilot RCT of a structured education programme (DESMOND-ID) for adults with intellectual disabilities and type 2 diabetes (p. 297) TAGGART, Laurence	Quality of life and quality of support for people with severe Intellectual disabilities and Autism. (p. 341) RICHARDSON, Lisa	Using restraint in the care of people with intellectual disabilities: The role of the law in different countries (p. 330) DE WAARDT, D.A.	Approach to cost-benefit analysis between supported employment and special employment centers through comparative simulation with 24 workers (p. 372) JORDÁN DE URRÍES, F. Borja	Using a multi-sensory memory box to explore bereavement and loss issues with a young woman with profound intellectual and multiple disabilities (p. 299) YOUNG, Hannah
Type 2 diabetes education for adults with intellectual Disabilities (p. 297) TRUESDALE-KENNEDY, Maria	Manager and staff perspectives of skilled support (p. 342) WHELTON, Beckie	Freedom restrictions in a Dutch care organization for people with intellectual disabilities: Prevalence and factor (p. 331) SCHIPPERS, Baukje	Personalized employment support for people with intellectual disabilities (p. 372) STEVENS, Martin	

10:00-11:30				
KF	HS30	HS21	HS A	HS B
KN DEBRIEFING Moderator: Albert Brandstätter	1.1 INC Moderator: Klaus Lachwitz	1.13 HEALTH Moderator: Jan Blacher	1.1 DEMO Moderator: Michael Wehmeyer	1.9 PART Moderator: Tobias Buchner
Supported decision-making: for prime ministers only? SCHULZE, Marianne	Using video to help people make their own decisions GOODWIN, Julian	Behavior problems and mental disorders in adolescents with autism spectrum disorder, intellectual disability, or typical cognitive development I: group comparisons (p. 304) BAKER, Bruce	Intellectual Disability in Namibia (p. 375) NIYAZI, Nadia	People with intellectual disability and phenomenological research: a review of the literature (p. 361) CORBY, Deirdre
	This Is How I Do – A person-centered tool of describing support needs RAJALAHTI, Aarne	Behavior problems and mental disorders in adolescents with autism spectrum disorder, intellectual disability, or typical cognitive development II: collateral effects on parents (p. 304) BLACHER, Jan	Enhancing the transition from secondary school to post-secondary education for students with autism spectrum disorder (ASD) (p. 375) VAN HEES, Valérie	How to meaningfully include children and young people with ID in research (p. 361) OULTON, Kate
	Self-Advocates Shaping Support Services HOPKINS, Rob	Longitudinal predictors of maternal depression in mothers of children with and without intellectual disabilities (p. 304) ZEEDYK, Sasha	Learning Opportunities Throughout the Lifespan: Presentation of Initial Research Findings (p. 375) VEYRE, Aline	Doing research together: a study about the views of people with intellectual disabilities and non-disabled researchers that collaborated in a research about transition to adult life (p. 361) PUYALTO, Carolina
		Discussant: International perspectives on health, well-being, and ID (p. 304) WALSH, Patricia		

HS C	HS16
1.1 RT* Pushing the frontiers of knowledge in the field of parents and parenting with intellectual disability [1]: "There is nothing so practical as a good theory"	1.5 RT Equal recognition before the law: Reflections on the significance of Article 12 of the Convention on the Rights of Persons with Disabilities
Participants: FELDMAN, M. GRANQVIST, P. SIGURJONSDOTTIR, H. PACHECO, L. LLEWELLYN, G. MILDON, R. MCCONNELL, D. (p. 379) <i>*this roundtable continues until 13:30</i>	Participants: REDLEY, M. CLARE, I.C.H. HOLLAND, A.J. (p. 378)

11:30-12:00

Break

12:00-13:30

AM	HS33	HS34	HS7	HS31
1.2 HEALTH Moderator: Brian Salmons	1.6 PART Moderator: Eric Emerson	1.6 HEALTH Moderator: Darren Chadwick	1.2 EDU Moderator: Miguel Verdugo	1.2 LIV Moderator: Julie Beadle-Brown
Context-specific memory in children with attention deficit hyperactivity disorder (p. 297) KERNS, Kimberly	The Mental Health of Parents of 11 Year Old Children with and without Intellectual and Developmental Disabilities (p. 359) EMERSON, Eric	Health problems in adults with profound intellectual and multiple disabilities: parents' insights into diagnosis, treatment and management (p. 300) CHADWICK, Darren	Assessing quality of life related personal outcomes to improve services and supports (p. 291) GOMEZ, Laura	Moving towards a personal budget system in the Czech Republic - successes and challenges (p. 339) ŠIŠKA, Jan
Prospective memory in traumatic brain injury and intellectual disability: relationships with working memory and memory awareness (p. 297) MATEER, Catherine	Financial burden of families raising children with intellectual and developmental disabilities in the United States of America (p. 359) PARISH, Susan	Guidelines of the European Association of Intellectual Disability Medicine on physical and mental health issues (p. 300) EWALS, Frans	Assessing Supports for Spanish Children with Intellectual Disabilities (p. 291) GUILLÉN, Verónica	Responding to the needs of people left within institutions – A lesson from Bucharest (p. 339) KERR, Michael
Recall and source monitoring in children with and without fetal alcohol spectrum disorders (p. 298) PEI, Jacqueline	Marriage, separation and after: a longitudinal study of families who have children with disabilities in Norway (p. 359) TØSSEBRO, Jan	Physical Health Issues in Persons with Severe or Profound Intellectual and Multiple Disabilities: a Systematic Review (p. 300) VAN TIMMEREN, Dinette	Measuring significant limitations in adaptive Behavior (p. 291) NAVAS, Patricia	Responses to a reconfiguration of disability support services in Ireland (p. 339) LINEHAN, Christine
Executive function and attention profiles in preschool and elementary school children with autism spectrum disorder and attention deficit hyperactivity disorder (p. 298) SINZIG, Judith	Comparing carers of people with an intellectual disability, mental health problems, and dementia: sociodemographic profile and psychological adjustment (p. 360) TOTSİKA, Vasiliki		ARC-INICO Assessment of Self-determination Scale. Psychometric properties and factorial structure (p. 291) VERDUGO ALONSO, Miguel Angel	Development and outcomes of community-based services in Hungary (p. 340) TURNPENNY, Agnes

12:00-13:30				
HS32	ERS	HS23	HS27	HS28
1.14 HEALTH Moderator: Henny van Schroyen Lantman-de Valk	1.6 LIV Moderator: Fiona Keogh	1.2 LAW Moderator: Jane McCarthy	1.2 W&E Moderator: Germain Weber	1.10 HEALTH Moderator: Laurence Taggart
Preventive health screening for people with intellectual disabilities-a systematic review (p. 304) BAKKER-VAN GIJSSEL, Esther	Supporting the implementation of personalized services and supports in Ireland (p. 342) KEOGH, Fiona	The Right to a Fair Trial: is Article 6 a reality for defendants with IDD? (p. 331) FORRESTER-JONES, Rachel	Workshop/course for people with intellectual disabilities (p. 372) ABDULLAHI, Asso	Exploring the Theoretical Frameworks of health promotion for people with intellectual disabilities (p. 302) HANNA-TRAINOR, Lisa
An outpatient clinic for adults with Down syndrome, results and recommendations (p. 305) COPPUS, Antonia	An evaluation of personalized day supports for young people with intellectual disabilities (p. 342) WYNNE, Richard	The moral reasoning abilities of men and women with intellectual disabilities who have a history of criminal offending Behavior (p. 331) LANGDON, Peter	New labour market – old gender roles: working life after school for young adults with intellectual disability in Sweden (p. 373) ARVIDSSON, Jessica	Staffs' knowledge and attitudes towards the health promotion needs of people with intellectual disabilities (p. 302) HANNA-TRAINOR, Lisa
Organization of out-of-hours care for people with intellectual disabilities: a survey of service providers (p. 305) HEUTMEKERS, Marloes	An evaluation of alternative respite models in Irish disability services (p. 342) GUERIN, Suzanne	Assessment of co-occurring mental health and neurodevelopmental problems among prisoners with intellectual disability (p. 331) MCCARTHY, Jane	Experiences of participation of young people with intellectual disabilities in the transition process from school to working life (p. 372) FASCHING, Helga	Healthy living according to adults with intellectual disabilities, a thematic analysis of focus groups: "First, you need to know what is healthy for you!" (p. 302) KUIJKEN, Noortje
Health information exchange in general practice care for people with intellectual disabilities: a qualitative study on the patient perspective (p. 305) MASTEBROEK, Mathilde	A process model of the organizational transformations need for the personalization of housing and accommodation supports (p. 342) MCCONKEY, Roy	Screening Prisoners for Intellectual Disabilities in Three English Prisons (p. 331) MURPHY, Glynis	Transition to employment by young people with developmental disability: Family hopes and expectations in rural communities (p. 373) WILLSHER, Kerre	Adapted 'Health Matters Program': Promoting healthy lifestyles in individuals with an intellectual disability (p. 302) O'LEARY, Lisa
Towards tailored primary health care for persons with intellectual disabilities (p. 305) VAN SCHROJENSTEIN LANTMAN- DE VALK, Henny				

12:00-13:30				
KF	HS30	HS21	HS A	HS B
1.2 INC Moderator: Brigitte Lueger-Schuster	1.3 INC Moderator: Eva Schrammel	1.16 HEALTH Moderator: Henry Kwok	1.9 LIV Moderator: Shahin Shooshtari	1.2 PART Moderator: Shahin Shooshtari
Inclusive Research using a Participatory Action Approach (p. 329) COBIGO, Virginie	A Journey through the end of life ALLAN, Meredith	A guideline to increase the reliability of self-reports of people with mild intellectual disabilities (p. 306) DOUMA, Jolanda	Disability in the community: A review of the Situation for People with Intellectual Disability in Rural Sierra Leone. (p. 344) FODAY-MUSA, Teddy	Generation and elimination of fear: dialogue between dentists and persons with PIMD (p.357) CHEN, Nan-chieh
Inclusive research with people with intellectual disabilities – a structured literature review (p. 329) FRANKENA, Tessa	Nothing about us without us– Is this also true for people with severe impairments? SCHMID, Bernhard	IQ, the Flynn Effect, Mental Illness and Intellectual Disability: A Cognitive Reserve Hypothesis (p. 306) FLORIO, Tony	An Evaluation of a Community Living Initiative in West Dublin (p. 344) GRIFFITHS, Colin	Story Garden: An Exploratory Research on the Story Experiences and Experiencing with Stories for Persons with PIMD (p.357) CHEN, Nan-chieh
Hear Us Out! A Participatory Research Project with Disabled Young People (p. 329) FRANKLIN, Anita	My inclusive life with learning difficulties STADLER, Johann	Healthcare inclusion and everyday choices: an experiential perspective from adults with ID and their carers (p. 306) TERRAS, Melody	Perspectives of people with intellectual disabilities and family members to a major reconfiguration of disability support services in Ireland (p. 344) O' DOHERTY, Siobhain	Evaluating the effect of person characteristics on joint attention Behaviors of people with profound intellectual and multiple disabilities (p.357) NEERINCKX, Heleen
Using Appreciative Inquiry, a participative action research method, to develop a strategic plan in a small service for people with intellectual disabilities (p. 329) JACKSON, Richard		Computerized training as a primer for assessing cognitive mediation skills in people with intellectual disabilities (p. 306) VEREENOOOGHE, Leen	Crossing boundaries; QOL assessment in 6 countries using the Personal Outcomes Scale (POS) (p. 344) CLAES, Claudia	

HS C	HS16
1.1 RT* Pushing the frontiers of knowledge in the field of parents and parenting with intellectual disability [1]: "There is nothing so practical as a good theory"	1.6 RT Palliative Care for Adults with ID in Europe
Participants: FELDMAN, M. GRANQVIST, P. SIGURJONSDOTTIR, H PACHECO, L. LLEWELLYN, G. MILDON, R. MCCONNELL, D. (p. 379) <i>*this roundtable begins at 10:00</i>	Participants: WICKI, M.T. MEIER, S. ADLER, J. TUFFREY WIJNE, I. MCCARRON, M. PROBST, L. (p. 378)

13:30-15:00
Lunch Break
14:00-15:00
Poster Session: HEALTH Location: ARK
15:00-15:45
Keynote Speaker: Timothy P. Shriver Inclusive Sports Location: AM
15:45-16:00
Break

16:00-17:30				
AM	HS33	HS34	HS7	HS31
1.7 LIV Moderator: Roy McConkey and Timothy Shriver	1.7 PART Moderator: Malin Broberg	1.7 HEALTH Moderator: James Hogg	1.3 EDU Moderator: Vianne Timmons	1.3 LIV Moderator: Ignace Vermaes
Promoting inclusion through Special Olympics Project Unify®: an evaluation in four European countries (p. 342) DOWLING, Sandra	A content validation of the family impact questionnaire for Swedish families rearing children with intellectual and developmental disabilities (p. 360) BROBERG, Malin	Assessment of pain in persons with profound intellectual and multiple disabilities; analysis of reliability and validity of the REPOS (p. 300) BRUNS, Anne	Teaching Skills For Children With Intellectual Disability (p. 292) HAWACH, Abdul Hakim	Day to day care by support staff in group homes: Testing the Quicksan Strength-Based Approach (p. 340) DIEKER, Marlies
Community-based approach to address health disparities among Special Olympics Athletes (p. 343) ISPAS, Emilia	Parental causal attributions for child misbehavior and their relationship with parenting strategies: A comparison between parents of children with intellectual disabilities and typically developing children (p. 360) JACOBS, Myrthe	Developing an online resource toolkit to improve practice in the delivery of invasive procedures to people with profound intellectual and multiple disabilities (p. 300) HOGG, James	'Inclusion', 'Integration', 'Special': Varying conceptual understandings and perceived training needs among teachers supporting children with disabilities in Sri Lanka (p. 292) HETTIARACHCHI, Shyamani	What's your opinion? The experience of therapeutic climate in a treatment facility for adults with mild intellectual disability and severe challenging Behavior (p. 340) HELMOND, Petra
Special Olympics Unified Sports® Football: Empowering girls and women on and off the pitch (p. 343) MENKE, Sabine	Use of Harsh Parenting Practices in Parents of Children with Disabilities (p. 360) NORLIN, David	The actual condition of medical care at home for persons with medically-dependent severe motor and intellectual disabilities in Japan (p. 300) MATSUBASA, Tadashi	Experiencing history: treatment of people with learning difficulties during the National Socialist-era (p. 292) LINDMEIER, Bettina	Staff-Client interactions: the implementation of a Strength-Based Approach (p. 340) HUITINK, Cecile
Healthy Athletes: International comparisons of the health of persons with intellectual disability. (p. 343) SHELLARD, Amy	The Relationship between Challenging Behavior, Cognitions and Stress in Mothers of Individuals with Intellectual Disabilities (p. 360) ROSE, John		Typically developing preschool children's perception – understanding (attitude forming) towards children with disability (p. 292) ROTH, Dana	Influencing youth's beliefs about their potential to change in residential care by using the on-line intervention "Change Your Mindset" (p. 340) VERBERG, Fenneke

16:00-17:30				
HS32	ERS	HS23	HS27	HS28
1.3 HEALTH Moderator: Hélène Ouellette-Kuntz	1.17 HEALTH Moderator: Glynis Murphy	1.3 LAW Moderator: Angela Hassiotis	1.3 W&E Moderator: Fabrizio Fea	1.11 HEALTH Moderator: Jane McCarthy
Findings of the Confidential Inquiry into premature deaths of people with intellectual disabilities in England (p. 298) HESLOP, Pauline	An evaluation study of specialized care for people with ID and severe mental health problems (p. 307) DIJKXHOORN, Yvette	Mental Health in the Mainstream: Including Adults with ID in Generic In-patient Mental Health Services (p. 331) BERNAL, Jane	Intellectual disability and gender in the transition from school to vocational training and employment (p. 373) FASCHING, Helga	Music-based Autism Diagnostics (MUSAD): A newly developed diagnostic measure for adults with intellectual disabilities suspected of autism (p. 303) BERGMANN, Thomas
Mortality Surveillance in Adults with Intellectual Disability: Findings from the United States (p. 298) LAUER, Emily	Reduced Incident Reports as a Measure of Improved Quality of Care (p. 307) LOUISSE, Arjen	Being closer to home is of course a good thing. Or is it? (p. 332) CHAN, Trevor	Barriers which inhibit transition from school to employment (p. 373) FEA, Fabrizio	The diagnostic behavioral assessment for autism spectrum disorder – revised: a screening instrument for adults with intellectual disability suspected of autism spectrum disorder (p. 303) SAPPOK, Tanja
Understanding increasing longevity for people with intellectual disability: Findings from New York State Administrative Data (p. 298) MCCALLION, Philip	Preventing Challenging Behavior of Adults with Complex Needs in Supported Accommodation (p. 307) MCGILL, Peter	Sent away: 'export' of adults with ID to a rural county, the personal and economic costs (p. 332) SHANKAR, Rohit	Project Search UK - Does it deliver employment for young people with ID? (p. 373) KAEHNE, Axel	Validity of the social communication questionnaire in adults with intellectual disabilities and suspected autism spectrum disorder (p. 303) SAPPOK, Tanja
To understand differing patterns of age of death by gender and level of ID, for people with intellectual disability in Ireland (p. 298) MCCARRON, Mary	A framework to evaluate treatment of clients with ID and severe mental health problems (p. 307) WULMS, Guus	Reforming Mental Health Services for People with Intellectual Disability: The Development of Key Priorities and a National Guide for Australian Mental Health Service Providers (p. 332) TROLLOR, Julian	Employing people with intellectual disabilities in the public health workforce (p. 373) RUSS, Lesley	Screening for autism spectrum disorder in specialist mental health and forensic settings (p. 303) UNDERWOOD, Lisa

16:00-17:30				
KF	HS21	HS A	HS B	SEN
KN DEBRIEFING Moderator: Germain Weber	1.15 HEALTH Moderator: Gyles Glover	1.18 HEALTH Moderator: Stuart Todd	1.3 PART Moderator: Phil Davidson	1.2 RT Social inclusion in the neighborhood: bonding and bridging multiple perspectives
Inclusive Sports SHRIVER, Timothy P.	Exposure of Children with Developmental Delay to Social Determinants of Poor Health: Cross Sectional Study (p. 305) EMERSON, Eric	The last months of life of people with ID living in a NZ service (p. 307) TODD, Stuart	Perspectives on ageing by people with intellectual disabilities and their family carers in Belgium (p. 358) DE WINTER, Ann	Participants: OVERMARS-MARX, Tessa BRUMMEL, Annica MCHEIMECH, R. BREDEWOLD, F. COBIGO, Virginie (p. 379)
	Obesity and Health Behaviors of British Adults with Self-Reported Intellectual Impairments (p. 305) EMERSON, Eric	The methodology of the last days of life IDRS study (p. 307) TODD, Stuart	Ageing and Intellectual disability: A European perspective (p. 358) RAGHAVAN, Raghu	
	Gaps in the Evidence Base on the Health or Healthcare of People with Intellectual Disabilities: A Review of Systematic Reviews (p. 306) HATTON, Chris	First glimpses of the last days of life IDRS study (p. 307) TODD, Stuart	What do people with intellectual disabilities and their family carers say about ageing? (p. 358) RAGHAVAN, Raghu	
	Perceptions of Neighborhood Quality, Social and Civic Participation and the Self Rated Health of British Adults with Intellectual Disability (p. 306) HATTON, Chris	End of Life Decisions in Adults with Intellectual Disability in Residential Care Facilities in Switzerland (p. 308) WICKI, Monika Theresa	Subjective wellbeing and its correlates among adults diagnosed with comorbid intellectual disability and ADHD (p. 367) ARATEN-BERGMAN, Tal	

HS16
1.7 RT Grounding people in their own reality
Participants: CLAPTON, J. REDLEY, M. SCIOR, K. CHARNOCK, D. CLEGG J. (p. 380)

17:30-17:45
Break

17:45-19:15				
AM	HS33	HS34	HS7	HS31
1.8 LIV Moderator: Nicola Grove	1.4 PART	1.12 HEALTH Moderator: Sui Sone	1.4 EDU Moderator: Jan Tøssebro	1.4 LIV Moderator: Sabina Kef
Imagining autism: impact of a drama based intervention on the social communicative and imaginative Behavior of children with autism (p. 343) BEADLE-BROWN, Julie	Correlates of physical and mental health of family carers of people with profound intellectual and multiple disabilities (p. 358) CHADWICK, Darren	Usage of the grading system of epileptic control for persons with profound intellectual and multiple disabilities in Maria Wufeng caring home (p. 303) CHUANG, Hong-Tat	Analyzing qualitative interviews using I-Poems (p. 293) CORBY, Deirdre	The cooperation between social network members and professionals of parents with intellectual disabilities: insights in protective possibilities (p. 340) DE KIMPE, Jos
Taking part through telling stories: a pilot study of Storysharing® (p. 343) BUNNING, Karen	Do they agree? How parents and professionals value the support provided to persons with profound intellectual and multiple disabilities (p. 358) JANSEN, Suzanne	Oral care for persons with profound intellectual and multiple disabilities (p. 303) HUANG, Shun-Te	There is no age limit for learning (p. 293) PETITPIERRE, Genevieve	The Role of intelligence and Experience of Trauma and Abuse for Maternal Sensitivity in Mothers with Intellectual Disability and their children's Attachment: A Matched Comparison Study (p. 341) FORSLUND, Tommie
Community action through personal stories (p. 343) GROVE, Nicola	The impact of rearing a child with PIMD: research into time use of parents (p. 358) LUIJKX, Jorien	Bone health in individuals with profound intellectual and multiple disabilities (p. 304) LIN, Chih-Lung	Inclusive Post-secondary Education: The university experience for people with an intellectual disability (p. 293) RILLOTTA, Fiona	The effect of Video-feedback Intervention (VIPP-LD) on sensitive discipline by parents with intellectual disabilities (p. 341) HODES, M.W.
Imagining Autism: Evaluation of a drama based intervention for children with autism - the views of teachers and parents (p. 343) RICHARDSON, Lisa		Delivery of daily medical care for persons with profound intellectual and multiple disabilities: practice in various Countries (p. 304) SONE, Sui	The inclusive college experience: benefits, challenges and outcomes experienced by students with intellectual and developmental disabilities (p. 292) RYAN, Susan	Mindset of staff supporting parents with intellectual disabilities; The association with working alliance and parental intentions to ask professional support (p. 341) KEF, Sabina

17:45-19:15				
HS32	ERS	HS23	HS27	HS28
1.4 HEALTH Moderator: Robert Hock & Henny van Shrojenstein Lantman de Valk	1.8 PART Moderator: Bea Maes	1.0 LAW Moderator: Richard Curen	1.4 W&E Moderator: Teresa Iacoco	1.8 HEALTH Moderator: Chris Oliver
Family management ability among parents of children with Autism Spectrum Disorder (p. 298) HOCK, Robert	Effects of the High Quality Communication Intervention in People with Dual Sensory and Intellectual Disabilities (p. 360) DAMEN, Saskia	Supporting People with Intellectual Disabilities who have experienced abuse or trauma through psychotherapy. A model of disability psychotherapy (p. 330) BLACKMAN, Noelle	Employment, social capital and community participation among Israelis with disabilities (p. 374) ARATEN-BERGMAN, Tal	People or Trains? Visual Preference for Social versus Non-Social Information in Genetic Syndromes (p. 301) CRAWFORD, Hayley
How to Engage Fathers to Increase their Involvement while Taking Part in an Early Intervention-based Family Support Program (p. 299) TOTH, Gabor	Social networks of persons with (severe) profound intellectual and multiple disabilities: the current situation of the professional support in personal files (p. 361) KAMSTRA, Aafke	How Circles of Support and Accountability are able to deliver an effective community-based intervention for Adolescents with Intellectual Disabilities who exhibit Sexually Harmful Behavior (p. 330) CUREN, Richard	An Exploratory Study of the Factors Affecting Integration and Retention of Persons with Intellectual Disabilities in Open Employment (p. 374) DESHPANDE, Asha	Refining the profile of Social and Sensory Reinforcement in Angelman Syndrome (p. 301) HEALD, Mary
Parenting young children with an intellectual disability: parenting practices, relationships and children's Behavior problems (p. 299) TOTSIKA, Vasiliki	Children with profound intellectual and multiple disabilities in interaction with peers with PIMD and siblings (p. 361) NIJS, Sara	Independent sexual violence advisors for people with intellectual disabilities (p. 330) CUREN, Richard	Improvements in Acute Hospital Care through Employing People with Intellectual Disabilities (p. 373) MARSDEN, Daniel	The relationship between executive function and repetitive Behavior in Cornelia de Lange syndrome (p. 301) JOHNSON, Victoria
The impact of child characteristics on parental perceptions of challenging Behavior (p. 299) WAITE, Jane			Employment in Down syndrome: The experiences of individuals with Down syndrome, their employers and families in South Africa. (p. 374) TOD, Courtney	Atypical preference for adult social contact in children with Smith-Magenis syndrome (p. 301) WILDE, Lucy

17:45-19:15				
HS21	KF	HS A	HS B	HS30
1.4 LAW Moderator: Jayne Clapton	FREE PUBLIC PANEL DISCUSSION Inclusive Education Moderator: Albert Brandstätter (Lebenshilfe Österreich, AT)	2.7 PART Moderator: Loretto Lambe & Barbara Fornefeld	1.4 DEMO Moderator: Hélène Ouellette-Kuntz	INC RT Supported Decision Making Moderator: Hemma Mayrhofer
Choice, safeguarding and poor practice in residential care and supported living services for adults with learning disabilities (p. 332) FYSON, Rachel	Invited Participants: BIEWER, Gottfried (University of Vienna, AT), IANES, Dario (Free University of Bozen, I), KOPETZKY, Elisabeth (Self-advocate, AT), TIMMONS, Vianne (University of Regina, CA), POSPISCHIL, Friederike (Lebenshilfe Niederösterreich, AT), tbc HEINISCH-HOSEK, Gabriele (federal minister for women and civil service, AT)	Developing German Traditional Folk Stories into Multi-Sensory Experiences: Cross Cultural Exchanges and Shared Knowledge and Expertise (p. 365) FORNEFELD, Barbara	Using video-recording for research training: The experience of the Inclusive Research Network (p. 376) BURKE, Christina	Participants: KRISTANDL, Sonja WEDENIG, Barbara KATHREIN, Georg BARTH, Peter BRINEK, Gertrude MALY, Alexander
In your best interests? The Mental Capacity Act and people with ID (p. 332) MARRIOTT, Anna		Communication breakdowns and repair strategies among children with severe intellectual & developmental disabilities (p. 365) HETZRONI, Orit	Stop Motion' video: Mapping the stories of people with intellectual disabilities moving into community living (p. 376) SALMON, Nancy	
Direct payments and best interests: using mental capacity legislation to extend choice for people with ID (p. 332) SWIFT, Paul		Adapting traditional Scottish folktales in a multi-sensory way and using and evaluating them in schools and adult services for people with profound intellectual and multiple disabilities (p. 365) PHILLIP, Maureen	Understanding the Support Needs and Priorities of People with Intellectual Disabilities from Minority Ethnic Groups: Topics of Concern, and Resources for Services (p. 376) UNWIN, Gemma	
Support Planning in Practice (p. 333) WILLIAMS, Valerie		The benefits of participating in exchanges between two organisations and universities: the outcomes for people with profound intellectual and multiple disabilities (p. 365) YOUNG, Hannah		

SEN	HS16
1.4 RT Close collaborations with and within practice	1.8 RT Reducing the use of restraint and restrictive approaches to support ordinary community living
Participants: EMBREGTS, P. VAN OORSOUW W. (p. 379)	Participants: DEVEAU, R. MCDONNELL, A. MCGILL, P. POON, K. WEBBER, L. (p. 379)

20:00
Reception at the City Hall, (Location: Friedrich-Schmidt-Platz 1, 1010 Wien) Bring along your invitation card located in your congress bag!

Poster Presentations HEALTH 14:00- 15:00 Location: ARK		
Number	Presenter	Title
1	BATES, Amanda	Young people with an intellectual and developmental disability and cleft lip/ palate: Self-perceptions and experiences of cleft treatment. (p. 385)
2	BAUER, Corinna	Functional Behavior analysis as a diagnostic instrument for adults with profound intellectual disability and traits of obsessive-compulsive-Behavior: A case study (p. 385)
3	BURKE, Eilish	Structured feedback from older adults with an intellectual disability on their experience of attending for a health assessment: results from a pilot study (p. 386)
4	CHAPLIN, Eddie	Evaluation of a Guided Self Help package for people with intellectual disability (p. 386)
5	CHESTER, Verity	Home Visits: A Reflection on Family Contact in Specialist Forensic Learning Disability Care (p. 386)
6	CLARK, Phillipa	What do New Zealand paediatricians say about services for young people with a dual diagnosis? (p. 386)
7	CYTOWSKA, Beata	Supporting empowerment processes in women with intellectual and developmental disabilities (p. 386)
8	DEJONG, Hannah	Catatonic symptoms and circadian function in autistic spectrum conditions. (p. 386)
9	DOUGLAS, Laura	Exploring familial perspectives on parental bereavement in individuals with intellectual disabilities (p. 387)
10	FLOOD, Bernadette	An Effective Falls Group: Working with People with Intellectual Disabilities
11	FLYGARE WALLÉN, Eva	Cardio metabolic health in students with intellectual disabilities attending schools with a general health policy (p. 387)
12	GRAY, Jennifer	Factorial Structure of the Health Promoting Lifestyle Questionnaire-II in a Sample of Direct Support Professionals of Adults with Intellectual and Developmental Disabilities (p. 387)
13	GUILHOTO, Laura	Aging and intellectual disability in São Paulo, Brazil (p. 387)
14	HARDIMAN, Rebecca	The Prevalence, Topography and Operant Function of Challenging Behavior in Fragile X Syndrome (p. 387)
15	HOLLAND, Anthony	Preliminary results from the Dementia in Down's Syndrome study: Imaging beta-amyloid in the brains of adults with DS using [11C]-PiB-PET. (p. 387)
16	HOUWEN, Suzanne	Correlations between Motor and Cognitive Development in Children with and without Developmental Disabilities(p. 388)
17	HUWS, Jaci	Do people with a learning disability know what healthy eating is? (p. 388)
18	IWASAKI, Yuji	The increased use of short-stay service by people with profound intellectual and multiple disabilities requiring medical care (p. 388)
19	KOSEL, Markus	A Cognitive-Behavioral Emotion Management Group for people with intellectual disability(p. 388)
20	KOSEL, Markus	Low-dose venlafaxine for Behavior problems in adult patients with pervasive development disorders and intellectual disabilities (p. 388)
21	KOSEL, Markus	Mixed socio-educative and psychiatric therapeutic living structure for patients with autism spectrum disorders, intellectual disability and challenging Behavior (p. 388)
22	LUEGER-SCHUSTER, Brigitte	Trauma in people with intellectual disabilities (p. 389)
23	MANTESSO, Ulrico	Drug therapy in adult/elderly people with Intellectual Disabilities: results from a multicenter sample (p. 389)
24	MANTESSO, Ulrico	Drug therapy in adults/seniors with Down syndrome: results from a multicenter sample (p. 389)
25	MASON, Victoria	Bereavement Support for Adults with Learning Disabilities (p. 389)
26	MCGLINCHEY, Eimear	Cognitive reserve: implications for research in dementia for people with down syndrome (p. 389)
27	MCGLINCHEY, Eimear	Examining the usefulness of measures of executive function in individuals with down syndrome: a comparative review (p. 389)
28	MITA, Takehiko	Impact of motor and intellectual impairment on activities and participation of patients in institution for children with orthopedic impairments in Japan (p. 389)
29	MORIN, Diane	Relationships between physical and mental health and challenging Behavior and among people with intellectual disabilities (p. 390)
30	NARTSCHENKO, Valentina	Intellectual Disability and Dementia - Perception of Symptoms and the Management of Progression of Dementia by Staff of Group Homes for People with ID (p. 390)
31	OZAWA, Hiroshi	How tracheo-esophageal diversion and laryngotracheal separation improved the quality of life of a child with PIMD (p. 390)
32	PEREZ, Cristina	Healthcare use, ill-health and mortality in adults with intellectual disabilities (ID) and mealtime support needs (p. 390)
33	SCOTT, Emilly	BEAT-IT: A randomized controlled trial comparing a Behavioral activation treatment for depression in adults with intellectual disabilities with an attention control (p. 390)

Time	Event
08:00 – 19:00	Conference Registration, <i>Location: LO</i>
09:00 – 09:45	Keynote Speaker: Dr. Lisa Pfahl; <i>Location: AM</i>
10:00 – 13:30	Symposia Presentations
13:30 – 15:00	Lunch Break
14:00 – 15:00	Poster Session: LIV & PART; <i>Location: ARK</i>
15:00 – 15:45	Keynote Speaker: Mary McCarron, PhD RNID, RGN, BNS; <i>Location: AM</i>
16:00 – 17:30	Symposia Presentations
18:00 – 19:30	Anniversary Event, <i>Location: AM</i>
19:30	Anniversary Gala Dinner, <i>Location: Kuppelsaal, Technical University of Vienna</i>

09:00-09:45
Keynote Speaker: Dr. Lisa Pfahl Inequality, Education & Disability. The Role of Inclusive Policies in School-to-Work Transitions Location: AM (p. 289)

09:45-10:00
Break

10:00-11:30				
AM	HS33	HS34	HS7	HS31
2.1 HEALTH Moderator: Robert Davis	2.10 HEALTH Moderator: Malin Broberg	2.4 HEALTH Moderator: Philip McCallion	2.13 HEALTH Moderator: Mary McCarron	2.7 HEALTH Moderator: Jill Grey
Screening for depressive disorders in adolescents with intellectual disability (p. 308) GRAY, Kylie	Self-reported mental well-being in adolescents with intellectual and developmental disabilities: an initial psychometric evaluation of the WellSEQ (p. 313) ÅSBERG JOHNELS, Jakob	Possibilities for Monitoring Mortality Data in Different Parts of the UK (p. 310) GLOVER, Gyles	Supporting Older Adults with ID to engage in Health Screening: Lessons learned from The Irish Longitudinal Study on Ageing (IDS-TILDA) (p. 315) BURKE, Eilish	The impact of educational involvement on psychological adjustment among mothers of children with autism spectrum disorder: a longitudinal study (p. 311) BENSON, Paul
Reducing the prescription of psychotropics to people with intellectual disabilities (p. 308) DE DOELDER, Peter	Development of a self-report mental health questionnaire (WellSEQ) for adolescents with intellectual and developmental disabilities (p. 313) BOSTROM, Petra	Is a paper-based review of deaths sufficient? (p. 310) HESLOP, Pauline	Dual sensory impairment among older people in Ireland: Comparisons between a cohort of people with an intellectual disability and a cohort of the general population aged 50 years and older (p. 315) CLEARY, Eimear	Physical and mental health of families co-residing with an adult with an intellectual disability (p. 311) GREY, Jillian
The assessment of emotional development in persons with intellectual disabilities: psychometric properties of the scale for emotional development-revised (SED-R) (p. 308) VANDEVELDE, Stijn	The Mental Health of 11 Year Old Children with and without Intellectual and Developmental Disabilities (p. 313) EMERSON, Eric	Coding on cause of death certificates – issues for people with intellectual disability from the US and England (p. 310) LAUER, Emily	Utility of a Frailty Index in Older Adults with an Intellectual Disability: Preliminary Findings from Intellectual Disability Supplement to The Irish Longitudinal Study on Ageing (IDS-TILDA) (p. 315) MCCARRON, Mary	The impact of challenging Behavior on parental and child wellbeing (p. 311) KARAKATSANI, Efthalia
	Psychometric properties of the Strengths and Difficulties Questionnaire (SDQ) among school aged children with developmental disorders and intellectual disabilities (p. 314) HALVORSEN, Marianne	Examining mortality among adults with intellectual disabilities in Ontario, Canada (p. 310) OUELLETTE-KUNTZ, Helene		What can health models tell us about parental perceptions of challenging Behavior? (p. 312) WAITE, Jane

10:00-11:30				
HS32	ERS	HS23	HS27	HS28
2.1 PART Moderator: LMG Curfs	2.1 EDU Moderator: Michael Wehmeyer	2.1 LAW Moderator: Julie Beadle-Brown	2.4 PART Moderator: Roger Stancliffe	2.5 HEALTH Moderator: Carla Vlakamp
People with Intellectual Disabilities Talk about Sexuality: Important Implications for the Development of Sex Education (p. 361) SCHAAF SMA, Dilana	Simplify or complicate? Adults with intellectual disability as independent technology users: An eye-tracking study (p. 293) CSAKVARI, Judit	Living in fear: the impact of disability hate crime as reported by people with intellectual and developmental disabilities (p. 333) BRADSHAW, Jill	Training parents to support the communication and participation of children with intellectual disability who use a speech-generating device (SGD) (p. 363) ANDERSON, Kate	Safety and danger awareness in people with profound intellectual and multiple disabilities: exploratory study based on some caregivers' points of view (p. 310) PETITPIERRE, Genevieve
Sexuality and privacy among people with an intellectual disability: a qualitative study (p. 362) STOFFELEN, Joke	Dance as a conduit for informal learning of adults with Down syndrome (p. 293) MUMFORD, Anna Marie	Community safety partnership members' and police officers' views and experiences related to disability-related hate crime: findings from focus groups (p. 333) GUEST, Colin	Maintaining a Dyad between a Toddler with Communication Disorders and his Parent as a Primary Caregiver using Augmentative and Alternative Communication (p. 363) NEEMAN, Adi	Re-labelling Behavior. The effects of psycho education on identifying challenging Behavior in people with profound intellectual and multiple disabilities (PIMD). (p. 310) POPPES, Petra
"Accidental Counsellors": transition staff supporting the sexuality of young adults with intellectual and disability (p. 362) WILSON, Nathan	Transition to adulthood in Spain: perception of professionals on transition partnerships between services which support young people with intellectual disabilities. (p. 293) PALLISERA, Maria	Police officers' views, knowledge and experiences related to disability related hate crime (p. 333) MALOVIC, Aida	Systematic review of parent-implemented language interventions (p. 364) TE KAAT- VAN DEN OS, Danielle	Unsafe soundscapes as a cause of challenging Behavior in people with profound intellectual and visual disabilities (p. 310) VAN DEN BOSCH, Kirsten
	The influence of studying in academic courses on crystallized and fluid abilities of adults with ID LIFSHITZ, Hefziba	Living in fear: the experiences and reporting of disability hate crime by people with intellectual and developmental disabilities (p. 333) RICHARDSON, Lisa	The role of Speech-Language Therapists in adults with Intellectual Disability (p. 364) TOD, Courtney	

10:00-11:30				
KF	HS30	HS21	HS A	SEN
KN DEBRIEFING Moderator: Helga Fasching	2.1 INC Moderator: Silvia Weißenberg	2.1 LIV	2.1 DEMOS Moderator: Fabrizio Fea	2.1 RT State of the Art in Mental Health and Problem Behavior Moderator: Michael Seidel
Employment PFAHL, Lisa	How getting a job might help people with intellectual disabilities be more included in society HUMBER, Lee	Determining the communication accessibility issues of V/Line train travel for people with disabilities (p. 344) JOHNSON, Hilary	Art for All...Free Art...Not Art Brut Only! (p. 376) FEA, Fabrizio	Participants: ROJAHN Johannes Bertelli Marco COORAY Sherva SEIDEL Michael
	People with cognitive disabilities in tension between self-determination, equal participation and social expectations. A critical approach RONGE, Angelika	How Do People With Intellectual Disability Negotiate the City Centre: a report from Sheffield (p. 344) MCCLIMENS, Alex	Practical understanding: an approach to making ideas accessible (p. 376) GROVE, Nicola	
	Adulthood and the transition to adulthood of young people with learning disabilities POSTEK, Natalia	Is information enough? Increasing effectiveness of engagement and signposting for people with intellectual disabilities from migrant communities living in England, UK (p. 345) SALLAH, David	Meaningful participation and inclusion of adults with profound intellectual and multiple disabilities in music therapy (p. 376) LEE, Ju-Young	
		Accessible websites – What is out there? (p. 345) WAIGHT, Mary		

HS C	HS16
2.2 RT* Pushing the frontiers of knowledge in the field of parents and parenting with intellectual disability [2]: “Utilizing population-based and administrative data to push the frontiers of knowledge”	2.5 RT Primary Health Care and community based living
Participants: EMERSON, E. LLEWELLYN, G. HORGLUND, B. LALIBERTE, T. HINDMARSH, G. HAHN, L. AUNOS, M. WING MAN, N. MCCONNELL, D. (p. 379) <i>*this roundtable continues until 13:30</i>	Participants: COPPUS, Antonia MASTEBROEK, Mathilde BAKKER-VAN GIJSSEL, Esther HEUTMEKERS, Marloes VAN SCHROJENSTEIN LANTMAN- DE VALK, Henny (p. 378)

11:30-12:00

Break

12:00-13:30				
AM	HS33	HS34	HS31	HS7
2.2 LIV Moderator: Julie Beadle-Brown and Alan Finn	2.15 HEALTH Moderator: Henry Kwork	2.8 HEALTH Moderator: David Felce	2.11 HEALTH Moderator: Henny van Schrojenstein Lantman-de Valk	2.14 HEALTH Moderator: Michael, Seidel
Increasing the participation of people with intellectual and developmental disabilities in health and social care research - lessons from the literature (p. 345) BEADLE-BROWN, Julie	Behavior and emotional problems in children with developmental disabilities: Results of an Australian population level survey (p. 316) GRAY, Kylie	A systematic review of the Rett Syndrome Behavioral phenotype (p. 312) CIANFAGLIONE, Rina	Dysphagia-Related Safety for Adults With Developmental Disabilities: Restrictions, risk, and complacency (p. 314) HEMSLEY, Bronwyn	Community mental health services for people with ID: Findings from a rapid review HASSIOTIS, Angela
Promoting participation of people with autism and learning disabilities in research – lessons and experiences from the Living in Fear Project (p. 345) GUEST, Colin	Hospital staff experiences of caring for children and youth with ID and their families: it's the little things that make the difference! (p. 316) OULTON, Kate	Self-injury in Rett Syndrome (p. 312) FELCE, David	Two-year incidence of injuries amongst adults with intellectual disabilities who live with paid support in Scotland, UK (p. 314) PETROPOULOU, Evangelia	Psychiatric care for people with intellectual disabilities - an international perspective SCHANZ, Christian
Promoting participation of people with intellectual and developmental disabilities in social care research – developing an adapted version of ASCOT for self-report (p. 345) TURNPENNY, Agnes	Unforeseen' Health Issues as People with Disability Age: A Wake-up Call in Rural and Regional Areas (p. 316) WILLSHER, Kerre	The psychological well-being and adjustment of families with a daughter with Rett syndrome (p. 312) HASTINGS, Richard	An Approach to Minimizing Restrictive Practices Resulting in Sustainable Organizational Gains and Individual Outcomes (p. 314) ZEITER, Scott	
		Ageing in Rett Syndrome (p. 312) KERR, Michael	Treatment of People with Intellectual Disability in the NHS: a report from England (p. 315) MCCLIMENS, Alex	

12:00-13:30				
HS32	ERS	HS23	HS27	HS28
2.2 PART Moderator: LMG Curfs	2.2 EDU Moderator: Michael Wehmeyer	2.2 LAW Moderator: Glynis Murphy	2.8 PART Moderator: Jane McCarthy	2.5 PART Moderator: Germain Weber
Becoming the sexual person I want to be: An analysis of young adults' with intellectual disabilities experiences, understanding and use of sexuality and relationship education and information (p. 362) FRAWLEY, Patsie	Cultural and societal barriers to inclusion in three continents (p. 294) BIEWER, Gottfried	Healthcare service use and care pathways of prisoners with intellectual disability (p. 333) CHAPLIN, Eddie	The Easy Read Project: an investigation into the accessibility value of health-based 'easy read' literature (p. 366) BUELL, Susan	Positive Stories: Implementing the Positive Behavior Framework in Western Australia (p. 364) EDWARDS, Mark
Family caregivers' responses to sexuality and relationship support needs of young adults with intellectual disabilities (p. 362) KAHONDE, Callista	The Hinges of Exclusion. A woman's biographical struggle for participation (p. 294) BUCHNER, Tobias	People with Autism and the Criminal Justice System in England: Data from the Autism Self-Assessment Framework (p. 333) HATTON, Chris	Television viewing habits and preferences of adults and young people with intellectual disability: a survey using a Talking Mats® - Questionnaire (p. 366) BUNNING, Karen	Stability of esthetic preference of landscape and portrait art images and photographs in people with intellectual disability (p. 364) STICKEL, Susanne
Identifying effective methods for teaching sex education to people with intellectual disabilities: a systematic review (p. 362) SCHAAFSMA, Dilana	Opportunities and challenges in inclusive education and disability: A case study of Zambia (p. 294) CHIRWA, Masauso Simon	An evaluation of the EQUIP treatment Program with men who have intellectual or other developmental disabilities (p. 334) LANGDON, Peter	Effectiveness of Computer-Based Simulations on Learning of Social and Communication Skills by Children with IDD and ASD (p. 366) HETZRONI, Orit	Effects of inclusive sports in Austria (p. 364) TIPPL, Heinz
Women who love: an explorative study on the lived experiences of lesbian and bisexual women with a mild intellectual disability in the Netherlands (p. 362) STOFFELEN, Joke	Designing the least restrictive inclusive school environment (p. 294) HUTCHINGS, B. Lynn	Adapting the delivery of the Thinking Skills Program for prisoners with ID (p. 334) MURPHY, Glynis	Social media and intellectual disabilities (p. 366) SHPIGELMAN, Carmit-Noa	

12:00-13:30				
KF	HS30	HS21	HS A	HS C
2.2 INC Inclusion in the Workplace Moderator: Julia Purzner	2.3 INC Moderator: Silvia Weißenberg	2.5 LIV Moderator: Andreas Kocman	2.2 HEALTH Moderator: Gyles Glover	2.2 RT* Pushing the frontiers of knowledge in the field of parents and parenting with intellectual disability [2]: "Utilizing population-based and administrative data to push the frontiers of knowledge"
The "User Participation Team" HOCHMEISTER, Josef	Exploring ideas and theories in the research community: a three session symposium GROVE, Nicola	Building robust and supportive communities for people with intellectual disabilities who have experienced trauma. (p. 346) BLACKMAN, Noelle	The Clinical, Forensic, and Treatment Outcome Factors of Patients with Autistic Spectrum Disorders treated in a Forensic Intellectual Disability Setting (p. 308) CHESTER, Verity	Participants: EMERSON, E. LLEWELLYN, G. HORGLUND, B. LALIBERTE, T. HINDMARSH, G. HAHN, L. AUNOS, M. WING MAN, N. MCCONNELL, D. (p. 379) <i>*this roundtable begins at 10:00</i>
The sheltered workshop counsellor SAUGSPIELER, Robert		Constructing disability: The Effect of NPO Fundraising Campaigns on Attitudes and Donation Behavior towards People with ID (p. 346) KOCMAN, Andreas	Using Privacy Preserving Data Linkage to Observe Community Mental Health Services Delivered to People With an Intellectual Disability (p. 308) FLORIO, Tony	
No sheltered workshops anymore? On supported apprenticeship, inclusive employment and social work. KRAMMER, Alois		Social participation for older people with Intellectual Disability (ID) living in different residential settings in Ireland: results from wave 2 of the Intellectual Disability Supplement to the Irish Longitudinal Study on Ageing (IDS-TILDA) (p. 346) MCCAUSLAND, Darren	A survey of in-patient psychiatric care for people with intellectual and developmental disabilities in England (p. 309) GLOVER, Gyles	
People with learning difficulties become colleagues STUBENRAUCH, Gudrun		Fighting stigma and discrimination directed at people with intellectual disabilities among the general public (p. 347) SCIOR, Katrina	Changing the way that staff interact with people who have challenging Behavior: a review (p. 309) WEBB, Joseph	

HS16
2.6 RT End-of-life Issues and euthanasia and persons with PIMD
Participants: VLASKAMP, Carla RIJKHOEK, P. (p. 378)

13:30-15:00
Lunch Break

14:00-15:00

Poster Session: LIV & PART
Location: ARK

15:00-15:45

Keynote Speaker: Mary McCarron
Unlocking the Determinants of Successful Ageing: The Intellectual Disability Supplement to the Irish Longitudinal Study on Ageing
Location: AM
(p. 289)

15:45-16:00

Break

16:00-17:30				
AM	HS33	HS34	HS7	HS31
2.6 LIV Moderator: Colleen Adnams	2.9 HEALTH Moderator: Mike Kerr	2.16 HEALTH Moderator: Robert Davis	2.6 HEALTH Moderator: Paula Sterkenburg	2.12 HEALTH Moderator: Angela Hassiotis
Home and Independence: A study by the Inclusive Research Network (p. 347) BURKE, Christina	Exploring the medical and social needs of people with intellectual disabilities who have epilepsy. (p. 312) KERR, Michael	Obesity and hypertension in adolescents and adults with intellectual disability (p. 317) YILDIRIM SARI, Hatice	Case studies on mentalizing and non-mentalizing communication during daily care for children and adults with a visual impairment, intellectual disability and/or with problematic attachment (p. 311) DEKKER-VAN DER SANDE, Francien	Systemic therapy for adults with intellectual disability and psychiatric disorders: a pilot study on prevention of physical aggression, restraints and staff burnout in a cross-institutional setting (p. 314) GAESE, Franziska
South African Adults with intellectual disability speak about residential options (p. 347) MCKENZIE, Judith	Children at risk of prenatal alcohol damage perform below average compared to their non prenatal alcohol exposed peers on a neurodevelopmental test battery (p. 313) ROOZEN, Sylvia	Comparison of sleep parameters and associated factors in a matched nationally representative population sample in persons with and without an intellectual disability (p. 317) MULRYAN, Niamh	The effects of mindfulness for people with visual and moderate intellectual disability and their caregivers (p. 311) HOKKE, Hannlies	Secure inpatient services for people with intellectual disability: do we need them? (p. 314) HALL, Ian
Moving Home: Self-advocates in Nova Scotia and Ireland leaving congregated settings for community living (p. 347) SALMON, Nancy	Does an intellectual disability epilepsy service improve outcomes for patients with intellectual disability and epilepsy? A 9 year study of sudden unexpected death in epilepsy in the UK (p. 313) SHANKAR, Rohit	Psychological treatment for sleep problems in adults with intellectual disabilities (p. 317) TRIANTAFYLLOPOULOU, Paraskevi	The effect of a recently developed serious game on prejudice towards persons with disabilities (p. 311) STERKENBURG, Paula	Complex Behavior Service: enhanced model for challenging Behavior (p. 315) HASSIOTIS, Angela
Institutionalization or de-institutionalization? Directions and issues in the process of assisting the persons with intellectual disabilities in Romania (p. 347) VASILE, Cristian	Fetal Alcohol Syndrome Disorder in a rural area of the South West Ukraine (p. 313) TOORNSTRA, Annette			Involving people with intellectual disability in the assessment of clinical skills (p. 319) HALL, Ian

16:00-17:30				
HS32	ERS	HS23	HS27	HS28
2.3 PART Moderator: Philip McCallion	2.3 EDU Moderator: Vianne Timmons	2.3 LAW Moderator: Hans Reinders	2.7 LIV Moderator: Roy McConkey	2.6 PART Moderator: Marjorie Aunos
Exploring the differences in carer strain in sibling and parent carers of older people with an intellectual disability in Ireland (p. 363) GRIFFITHS, Marianne	Participation of disabled children in the Austrian school system (p. 295) BRANDSTETTER, Friedrich	An Explorative Qualitative Study on Supported Decision-Making (p. 334) DEVI, Nandini	Understanding Professionals' Competence Development in Working with Parents with Intellectual Disability (p. 347) MCHUGH, Elaine	Parenting in families of school-aged children with autism spectrum disorder: an observational study (p. 364) BOONEN, Hannah
Self-reported Behavior problems and sibling relationship quality by siblings of children with autism spectrum disorder (p. 363) HASTINGS, Richard	Inclusive education, logics and ambivalence (p. 295) INELAND, Jens	Sterilization of people with intellectual disabilities: Issues for consideration (p. 334) HAYES, Susan	The development and evaluation of a training package for community nurses on supporting families with children who have developmental difficulties (p. 348) MCCONKEY, Roy	Exploring parenting Behavior in families of children and adolescents with autism spectrum disorder and/or intellectual disability (p. 365) MALJAARS, Jarymke
Adolescent siblings of children with intellectual and developmental disabilities in Norway: Unique experiences and typical childhood (p. 363) TØSSEBRO, Jan	Promoting social capital through inclusion in Swedish Schools (p. 294) PERSSON, Bengt	Possible moral contra-indications concerning fertilization treatments (p. 334) ROOVERS, Madeleine	Professionals' experiences of conducting research interviews with parents who have children with disabilities (p. 348) STARKE, Mikaela	What Do Families from Ethnic Minorities with Children who have an Intellectual Disability Need from Local Authorities: a report from Rotherham (p. 365) MCCLIMENS, Alex
Caring for an Adult Sibling with Intellectual/ Developmental Disabilities: Factors Affecting the Decision to Assume Care ZENDELL, Anna	Social Position of Children with Mild Intellectual Disabilities in Integrated Schools in Hungary (p. 294) SZEKERES, Ágota	Health care decision-making by adults with intellectual disability and the effect of a decision-support (p. 334) SCHOSSLEITNER, Katharina	Planning for the future for family carers of adults with intellectual disabilities (ID): training-the-trainers: A pilot study (p. 348) THOMPSON, Angela	The experience of motherhood by women with intellectual disabilities (p. 365) WOŁOWICZ – RUSZKOWSKA, Agnieszka

16:00-17:30				
KF	HS21	HS A	HS B	HS16
INC RT Moderator: Franz Wolfmayr	2.3 LIV Moderator: Phil Davidson	2.2 DEMOS Moderator: Maria Dinold	2.3 HEALTH Moderator: LMG Curfs	2.7 RT A Framework for an Integrated Process for Improving Quality of Life
Inclusion in the workplace KOPERA, Iris GRABMAYER, Roland TSCHANN, Elisabeth BACHER, Robert BUCHINGER, Erwin BIEWER, Gottfried	Community-based social inclusion in urban neighborhoods of adult citizens with intellectual disability and citizens with psychiatric problems; contribution of informal networks (p. 345) BRUMMEL, Annica	Preconditions and Challenges for Participation of People with ID in Physical Activity, Dance, and Sport (p. 377) DINOLD, Maria	Lost in transition: quality of life and transitional process to adult health services in patients with Rett syndrome (p. 309) FREILINGER, Michael	Participants: BROWN, Ivan VERDUGO, Miguel Angel SCHIPPERS, Alice ROTH, Dana CROCE, Luigi (p. 380)
	The friendships of people with intellectual disability (p. 346) CALLUS, Anne-Marie	Resident Representation for People with Intellectual Disabilities whose Right to Personal Freedom is Restricted (p. 377) JAQUEMAR, Susanne	En route to disentangle early Behavioral abnormalities as early markers for maldevelopment: Learning from Rett syndrome (p. 309) MARSCHIK, Peter	
	Evaluation of the Factors and Components of Societal Integration of Adults with Congenital Physical Disabilities (p. 346) HETZRONI, Orit	Clearing plus support for self-determination (p. 377) TUPPA, Franziska	Rett syndrome and older age (p. 309) SMEETS, Eric	
	Social inclusion in the neighborhood from multiple perspectives (p. 346) OVERMARS-MARX, Tessa		Growth faltering and osteoporosis in Rett syndrome (p. 309) VAN WAARDENBURG, D.A.	

17:30-18:00
Break

18:00-19:30
Anniversary Address (Location: AM)

19:30
Anniversary Gala Dinner (Location: Kuppelsaal, Technical University of Vienna, Karlsplatz 13, 1040 Wien)

Poster Presentations LIV/PART 14:00-15:00 Location: ARK		
Number	Presenter	Title
1	ABE, Mihoko	Practical Study of the Effect of a Sibling Support Program Creating a Picture Portfolio about a Child with Disabilities and a Family (p. 392)
2	BERNAL, Jane	Eight Years Later. Long-term Follow-up of Former Inpatient Survivors of Institutional Abuse (p. 392)
3	CHIU, Pak	Cost and Benefits of Social Care Support for Ex-offenders with Intellectual Disabilities (p. 392)
4	CRUZ, Virginia	Adolescents with Intellectual Disabilities who Commit Sexual Offenses: Exploration or Exploitation? (p. 392)
5	DE SCHIPPER, J. C.	Emotional Availability of Support Staff and Attachment Behavior of Young Adults with Mild ID and Attachment Problems (p. 392)
6	DEVEAU, Roy	Characteristics of High-cost Residential Placements and Implications for Local Community Support (p. 392)
7	DUSART, Anne	Testing Self-determination Tools for People with Intellectual Disability Reaching the End of their Lives (p. 395)
8	FORRESTER-JONES, Rachel	People with ID Growing Older: The Case for Specialist Care? (p. 395)
9	FULLANA, Judit	Evaluation of a Training Program on Research Methodology for People with Intellectual Disabilities to Enhance their Opportunities to be Co-researchers (p. 392)
10	GOMEZ, Laura	Quality of Life in Children and Adolescents with Intellectual Disabilities (p. 395)
11	GÓMEZ-VELA, María	Does Participation in Leisure Activities Influence the Quality of Life in Children and Adolescents with Cerebral Palsy? (p. 395)
12	GÖVERT, Uwe	Challenges Posed by Dementia in Everyday Working Life for Employees in Facilities for People with Intellectual Disability (p. 395)
13	HAINES, David	Occupational Therapy Supporting People with PIMD to Engage Meaningfully in Activities at Home (p. 395)
14	HENNIG, Birgit	Communicative Means and Functions in the Degenerative Course of MPS III / Sanfilippo – Challenges and Chances for Managing the Communication Process (p. 396)
15	HODGETTS, Sandra	Autonomous Goal Setting in Children and Adolescents with ASD (p. 396)
16	JOHNSON, Hilary	Communication Access: A Pathway to Community Inclusion (p. 393)
17	KANFISZER, Lucie	The Lived Experiences of Women with an Autism Spectrum Disorder: A Narrative Inquiry (p. 393)
18	KASCHA, Lisa	Evaluation of the Current Educational Situation of Caregivers Supporting People with Intellectual Disabilities (p. 393)
19	KERSTEN, Marion	Knowledge Transfer Into Society Through an Online Toolkit on Older People with an Intellectual Disability (p. 396)
20	KERSTEN, Marion	Uniting forces: a new Dutch Program on research and knowledge transfer (p. 393)
21	KUSKE, Bettina	Diagnosis of Dementia in People with Intellectual Disabilities - A German Pilot Study (p. 396)
22	KYOUNGOCK, Park	Confirmatory Factor Analysis and Model Fit Test of Assessment Index on Non-verbal Communication for Students with Profound Intellectual and Multiple Disabilities (p. 396)
23	MCCALLION, Philip	Dental Attendance Among Older Adults with Intellectual Disabilities in Ireland (p. 396)
24	MEIER, Simon	(Dis-)Empowerment of Participation in Daily Life Communication (p. 397)
25	MORIN, Diane	Comparing the Attitudes of Health Professionals and the General Population Towards People with Intellectual Disabilities (p. 393)
26	MOYSON, Tinneke	The Sibling Booklet : Talking with Siblings about their Experiences to Enhance their Sibling's Quality of Life (p. 396)
27	NIJS, Sara	The Role of the Support Worker During Peer Interactions Between Children with Profound Intellectual and Multiple Disabilities (p. 397)
28	OLDREIVE, Warren	Without CAAPITT, it's Curtains to Accessible Information! (p. 394)
29	PALA, Alexis	Adults with Intellectual Disabilities: A Look at Spain and Chile (p. 394)
30	PETROPOULOU, Evangelia	Play Workers' Perceptions of Friendships Among Adolescents with High Functioning Autism/ Asperger Syndrome (p. 397)
31	PUTNAM, Michelle	Scoping Review of the Evidence Base for Long-Term Services and Supports for Persons Aging with Disability (p. 397)
32	SHIVERS, Carolyn	Acceptability of a Multimedia Life Stories Platform in a Residential Home for Individuals with dementia and Intellectual Disability (p. 397)
33	GIMENO SANTOS, Mercedes	Aging in Persons with Down Syndrome: Attention, Memory and Executive Function Assessment (p. 398)
34	SIMÓN, Cecilia	Promoting Family-centered Practices in Early Intervention Centers for Children with Intellectual or Developmental Disabilities (p. 394)

Poster Presentations LIV/PART

14:00-15:00

Location: ARK

Number	Presenter	Title
36	STILES, Ciara	Towards Onset Prevention of Cognition Decline in Adults with Down Syndrome: The TOP-COG Study (p. 398)
37	SUEMITSU, Shigeru	Needs Analysis and Future Development of Profound Intellectual and Multiple Disability (PIMD) Daycare Services in Japan (p. 394)
38	TAMEKAWA, Yuji	Misunderstandings about Developmental Disabilities in Japan (p. 394)
39	TE KAAT- VAN DEN OS, Danielle	Expressive Vocabulary Development in Children with Down Syndrome Age 18 to 33 months: Profiles and Growth Patterns (p. 398)
40	TUFFREY-WIJNE, Irene	Disseminating Research Findings to Non-academic Audiences: "How to break bad news to people with intellectual disabilities"(p. 398)
41	TUFFREY-WIJNE, Irene	Safeguarding Patients with Intellectual Disabilities in General Hospitals against Avoidable Deaths and Inappropriate Commencement of End of Life Care (p. 398)
42	VEGA, Vanessa	Self-determination: the Right of All and for All (p. 394)
43	WOLFF, Christian	Participation of People with Intellectually Disabilities Suffering from Dementia in Residential Facilities (p. 395)
44	YINGLING, Marissa	Parent Perceived Challenges to Treatment Utilization in a Publicly-Funded Behavioral Intervention Program (p. 394)

Wednesday, 16th July

Time	Event
08:00 – 19:00	Conference Registration, <i>Location: LO</i>
09:00 – 09:45	Keynote Speaker: Jan Šiška; <i>Location: AM</i>
10:00 – 13:30	Symposia Presentations
13:30 – 14:30	Lunch Break
13:30 – 14:30	Poster Session: W& E; EDU; <i>Location: ARK</i>
14:30 – 17:45	Symposia Presentations
18:00 – 18:45	Keynote Speaker: Dr. Laurence Taggart; <i>Location: AM</i>
18:45 – 19:30	Closing Ceremony, <i>Location: AM</i>

09:00-09:45
Keynote Speaker: Jan Šiška Community Based Living Location: AM (p. 289)

09:45-10:00
Break

10:00-11:30				
AM	HS33	HS34	HS7	HS31
3.1 HEALTH Moderator: Angela Hassiotis	3.13 HEALTH Moderator: Phil McCallion	3.9 HEALTH Moderator: Claire Azzopardi Lane	3.1 LIV Moderator: Malin Broberg	3.5 LIV Moderator: Colleen Adnams
Amino acids and cognitive deterioration in 22q11 deletion syndrome (p. 317) EVERS, Laurens	Developing a Baseline Picture of the Bone Health Status of Older Adults with an Intellectual Disability in Ireland. (p. 324) BURKE, Eilish	Breast Cancer and Women with Intellectual Disability: Are We Screening? (p. 322) AZZOPARDI LANE, Claire	The Development of an Intervention to Promote the Capacity to Wait in Children with Intellectual Disability (p. 348) GILMORE, Linda	Psychometric properties of Personal Outcome Scale Children version (p. 351) CROCE, Luigi
Health and social care resource use by individuals with Fragile X in Canada and the UK (p. 317) HASSIOTIS, Angela	Prevalence and Factors associated with High Anticholinergic Burden in Ageing People with Intellectual Disabilities in Ireland (p. 324) O'DWYER, Máire	Constructing Sexual Identities: People with Intellectual Disability Talking about Sexuality (p. 322) AZZOPARDI LANE, Claire	Family-Centered approach in Early Intervention in Spain: opportunities and challenges (p. 348) MAS, J. M.	Improving Quality of Life, Fulfilling Rights. The Use of the POS-A in Support Plans for People with ID (p. 351) CLAES, Claudia
Twenty-four hour-response curve of melatonin in Smith-Magenis syndrome (p. 318) SPRUYT, Karen	Prevalence and Predictors of Multiple Medicine Use in an Ageing Population with Intellectual Disability in Ireland (p. 325) O'DWYER, Máire	Exploring opportunities for sexual health screening for women with intellectual disability in Malta (p. 322) AZZOPARDI LANE, Claire	Experiences from a Longitudinal Intervention Project in Sweden (p. 348) NYQVIST CECH, Berith	Developing and testing the Community Participation and Quality of Social Interactions Survey for people in community based residential services (p. 351) ZELIĆ, Martina
Caregiver Reported Sleep Onset Latency, Night-waking and Early Waking in Smith Magenis Syndrome (p. 318) SPRUYT, Karen		Working with adults with intellectual disabilities to promote their sexual health: Program innovation, implementation, and evaluation (p. 322) CHOU, Yueh-Ching	Experienced and needed parental support in non-western immigrant families with a child with mild intellectual disabilities (MID) in the Netherlands (p. 353) SWENNENHUIS, Petra	

10:00-11:30				
HS32	ERS	HS23	HS 27	HS28
3.5 HEALTH Moderator: Glynis Murphy	3.1 EDU	3.1 LAW Moderator: Keith McVilly	3.17 HEALTH Moderator: Michael Seidel	3.1 PART Moderator: Laurence Taggart
Psychotherapy in people with intellectual and developmental disabilities (p. 320) ELSTNER, Samuel	Psychometricity as a Reading Access Facilitation Strategy for Children with Learning Disabilities (p. 295) ALMEIDA, Alcinda	Safeguarding the rights of people with disabilities: An organizational system approach (p. 335) CHAN, Jeffrey	From ICD-10 to ICD-11 and People with Disorders of Intellectual Development (PWDID) (p. 327) COORAY, Sherva Elizabeth	Future Planning for People with Intellectual Disabilities and their Ageing Family Carers in Switzerland (p. 366) ADLER, Judith
Attachment disordered Behavior and other forms of psychopathology (p. 320) GILTAIJ, Hans	Telling tall stories: the use of multisensory 'Story boxes' based on children's storybooks to improve vocabulary and narrative skills in children with intellectual impairment (p. 295) HETTIARACHCHI, Shyamani	Safeguarding Children and Adults with Intellectual, Developmental and Sensory Disability from Neglect and Abuse (p. 335) MCVILLY, Keith	The ICD- 11 and People with Disorders of Intellectual Development (Intellectual/ Developmental Disability) (PWDID): A Question of Clinical Utility (p. 327) COORAY, Sherva Elizabeth	Content analysis of individual support plans for people with intellectual disabilities (p. 366) HERPS, Marjolein
Safe to Succeed: Importance of Creating a Trauma-Informed Environment to Promote Self-Determination (p. 320) MARSHALL, Lisa	Influence of computer intervention and video modeling multi-media on social-skill acquisition among students with intellectual disabilities (p. 295) HETZRONI, Orit	If you can't read It...Click It: promoting access to legal information for a gentleman with an intellectual disability (p. 335) OLDREIVE, Warren	Anormality versus Normality in a Perspective of Inclusion: A Clinical Anthropological Approach (p. 327) DE GROEF, Johan	Future time perspective in parents of children and adults with intellectual disability: the role on future planning and quality of life dimensions (p. 367) SGARAMELLA, Teresa
	Teacher Delivery of Emotion-Based Social Skills Training to Adolescents with a Moderate Intellectual Disability: A Novel Whole-School Approach to Teaching Social-Emotional Skills (p. 295) RATCLIFFE, Belinda	Participation: Our Experiences and Needs. Interviews with Representatives of Interests for People with Disabilities (p. 335) SCHWEINSCHWALLER Thomas	Intellectual disability in the DSM-5: pros and cons SEIDEL, Michael	Life Designing with intellectual disability: domain specific goals and determinants in adolescents and young adults with intellectual disabilities (p. 367) SGARAMELLA, Teresa

10:00-11:30		
KF	HS30	HS21
KN DEBRIEFING Moderator: Helga Fasching	3.1 INC Moderator: Birgit Mondl	3.10 LIV Moderator: Hélène Ouellette-Kuntz
Community based living ŠIŠKA, Jan	The Right of Selfdetermination in Public Health and Care KAUFMANN, Eringard	Subjective wellbeing and young people with intellectual disabilities: Does attending a peer populated sports groups improve wellbeing (p. 354) GARROD, Christopher
	Federal Disability Equality Act MEIERSCHITZ, Christina	Determinants of Health Care Service Utilization in People with Developmental Disabilities : An application of the Gelberg-Andersen Behavioral Model for Vulnerable Populations (p. 354) SANGEUN, Cho
	A self-representative talks about what she needs in Austria to put laws into practise RAHM, Mirjam	Spirituality and people with Intellectual Disability (ID): Comparing the significance of faith and spirituality in faith and non-faith based care services (p. 354) SANGO, Precious
		An Environmental Scan of Community-based Primary HealthCare in relation to Adults with Intellectual and Developmental Disabilities in four Canadian Provinces of Manitoba, Ontario, Nova Scotia and Québec (p. 354) SHOOSHTARI, Shahin

11:30-12:00

Break

12:00-13:30

AM	HS33	HS34	HS7	HS31
3.9 PART	3.6 HEALTH Moderator: Virginie Cobigo	3.10 HEALTH Moderator: Eric Emerson	3.11 LIV Moderator: Bea Maes	3.2 LIV Moderator: Christine Linehan
Profound intellectual and multiple disabilities (p. 371) BOREN, Taylor	Medication use among adults with intellectual and developmental disabilities (p. 320) COBIGO, Virginie	Reviewing intervention plans and collaboration between specialized and child welfare agencies in the lives of parents with intellectual disabilities (p. 322) AUNOS, Marjorie	Perinatal Hospice: Supporting families with a dying baby during pregnancy and early life (p. 354) GOLL, Harald	The role of self-advocacy groups in challenging traditionally exclusive patterns and negative attitudes towards persons with ID in the community (p. 349) BIRTHA, Magdi
Motor Activation and the Role of Theory in People with Severe or Profound Intellectual Disabilities (p. 371) HOUWEN, Suzanne	Presence and determinants of physical health parameters in people with intellectual disability who use long-term antipsychotics (p. 320) DE KUIJPER, Gerda	The social and emotional wellbeing of young children with mothers with and without cognitive limitations (p. 322) HINDMARSH, Gabrielle	Caring for adults with intellectual disability in South Africa: Family members' perspectives (p. 354) MCKENZIE, Judith	Quality of life of people with intellectual disability in Israel- Participatory Evaluation approach (p. 349) ROTH, Dana
Evaluating quality of life for children with multiple disabilities: issues and methodological questions (p. 371) SCELLES, Régine	People with intellectual disabilities and the medication use process. Grounded Theory analysis of information from interviews with 6 people (p. 321) FLOOD, Bernadette	Using longitudinal data to examine pregnancy outcomes among women with and without intellectual and developmental disabilities (p. 322) MITRA, Monika	Parents' perception of received support during their youth's transition period and their perception of their youth's future (p. 355) NOWAK, Herawati	Including adults with ID in actions to raise disability awareness among public service employees. People with ID coach public service employees-a best practice example (p. 349) SCHOCK, Mireille
	Quality Indicators of the Medication Use Process in Adults with Intellectual Disabilities and Behavior Disorders: An opportunity to address health inequities (p. 321) FLOOD, Bernadette	A national profile of deliveries by women with intellectual disabilities in the US: Maternal characteristics and pregnancy outcomes (p. 323) PARISH, Susan	The Magenta Project: Effectiveness of an intervention on managerial skills for parents with a young child with disabilities (p. 355) SEGHERS, Noor	Self-advocacy and resistance in Sweden (p. 349) TIDEMAN, Magnus

12:00-13:30				
HS32	ERS	HS23	HS27	HS28
3.14 HEALTH Moderator: Glynis Murphy	3.2 EDU Moderator: Tobias Buchner	3.2 LAW Moderator: Germain Weber	3.2 PART Moderator: Karen Watchman	3.6 PART Moderator: Stuart Todd
Group cognitive Behavioral therapy for people with Asperger Syndrome who have problems with anxiety: the initial results of the PAsSA pilot treatment trial (p. 325) LANGDON, Peter	Promoting social integration among mainstream and special school peers through a peer-mediated social integration Program (p. 296) LEE, Bernice	People with Intellectual Disability and Borderline-Intelligence in Austrian Prisons (p. 335) PURZNER, Julia	Parents with intellectual difficulties in Norway: An explorative study. (p. 367) BERG, Berit	End of Life Care for People with Intellectual Disability (p. 369) HUSSAIN, Rafat
Group cognitive Behavioral therapy for people with Asperger Syndrome who have problems with anxiety: views of the people with Asperger Syndrome (p. 325) MALOVIC, Aida	Reliable Evidence Based Outcomes Optimization Technologies (REBOOT): Technology infrastructures and decision-support to increase positive outcomes (p. 296) MARSHALL, Lisa	Importance of locus of control in treating offenders with intellectual disability (p. 335) RAYMOND, Matthew	'You've seen us!': Masculinities in the lives of boys with Intellectual Disability (ID) (p. 367) CHARNOCK, David	A GIS-based planning tool for the socio-spatial analysis of the elderly population with and without disabilities and their support (p. 369) RODEKOH, Bianca
Emotion-based Social Skills Training for Children with Autism Spectrum Disorder and Mild Intellectual Disability: A Controlled Intervention Study of 75 Children in Australian Primary Schools (p. 325) RATCLIFFE, Belinda	The importance of explaining autism to peers for promoting social inclusion and interaction in mainstream school classrooms (p. 296) MOLTENI, Paola	The Core Features of 'good' Community Support for People with Intellectual Disabilities who have Offended, or are at Risk of Offending (p. 335) WHEELER, Jessica	A qualitative analysis of the experiences and needs of parents supporting young adolescents with intellectual disability through puberty and emerging sexuality (p. 367) O'NEILL, Jenny	Inclusive social planning for elderly persons with lifelong disabilities in the community (p. 369) SCHÄPER, Sabine
		New legislation and new secure service for Queensland - The Queensland forensic disability act (2011) and the forensic disability service three years on: a follow-up of all referred cases (p. 336) WHITE, Alan		Written Policies on End-of-life Care in Residential Homes for Adults with ID (p. 369) WICKI, Monika Theresa

12:00-13:30				
KF	HS30	HS21	HS A	HS B
3.2 INC Moderator: Klaus Lachwitz	3.3 INC Moderator: Birgit Mondl	3.6 LIV Moderator: Jane McCarthy	3.18 HEALTH Moderator: Philip Dodd	3.2 HEALTH Moderator: Angela Hassiotis
Actions for Inclusion NYGVIST CECH, Berith	Workplace Bischofshofen – A group in new ways BRANDNER, Brigitte	The Relationship between Communication and Quality of Person Centered Active Support (p. 351) IACONO, Teresa	Fit for Purpose? Examining the Occurrence of Persistent Complex-Bereavement Related Disorder in Intellectual Disability (p. 327) GUERIN, Suzanne	Effectiveness of annual health checks for patients with intellectual disability in primary care (p. 318) HASSIOTIS, Angela
A home of your own using a small (micro) incorporated agency (board)? WALKER, Ellen	Inclusive living in Vienna NEIRA-ZUGASTY, Helga	Predictive role of casual attribution in coping activity of mild intellectually disabled students in social daily hassles (p. 351) KURTEK, Paweł	Disseminating research findings to ensure an impact in practice and policy (p. 327) MARRIOTT, Anna	Comprehensive Health Assessments for Adults with Intellectual Disability (ID) in Manitoba: A Feasibility Study (p. 318) SHOOSHTARI, Shahin
Inclusive Research Network in Finland TIIHONEN, Petra	Ways to Inclusion STASKIEQICZ, Paier	An Evaluation of Positive Behavior Support Training (p. 351) MACDONALD, Anne	The lack of reasonable adjustments as a contributory factor to premature death (p. 327) MARRIOTT, Anna	Access to Primary Health Care and Problems Managed for People with an Intellectual Disability: Lessons from the BEACH Dataset (p. 318) TROLLOR, Julian
The Opportunity League: a radically inclusive approach to recreation and sport MILLER, Martin			A Survey of Psychodynamic Psychotherapy Outcomes for a Specialist Learning Disability Loss and Bereavement Service (p. 328) PARKES, Georgina	The evaluation of inequality in health care utilization for people intellectual disabilities in Taiwan (p. 318) WANG, Yu-Ju

HS16
3.6 RT The role of ideology in service development and design
Participants: BEADLE-BROWN, J.D. HATTON, C. (p. 379)

13:30-14:30
Lunch Break

13:30-14:30
Poster Session: W&E; EDU Location: ARK

14:30-16:00				
AM	HS33	HS34	HS7	HS31
3.12 LIV Moderator: Keith McVilly	3.7 PART Moderator: Mary McCarron	3.7 HEALTH Moderator: Peter Langdon	3.14 LIV Moderator: David McConnell	3.3 LIV Moderator: Patricia O'Brien
Magic2: an innovative informatics tool to support a multidisciplinary approach to child/family and person with Developmental Disabilities in a lifespan perspective (p. 355) ALBERTINI, Giorgio	Ageing-in-a-chosen-place: Commonalities and dissonance in life choice-making in elders with and without intellectual disability (p. 369) HUSSAIN, Rafat	Efficacy of a cognitive stimulation therapy Program with adults with Down syndrome: a randomized study (p. 321) COLLINS, Suzanne	Exploring the social worlds of children of mothers with intellectual disability (p. 356) COLLINGS, Susan	Building a community of inclusive practice through co-researching (p. 349) O'BRIEN, Patricia
Looking good: Multiple meanings for the body image of women with intellectual disability (p. 355) CONDER, Jennifer	The Relationship of Person-Environment Fit to Older Adults' Perceptions of Autonomy, Competency and Satisfaction (p. 369) HUTCHINGS, B. Lynn	The effectiveness of life story books and rummage boxes on the well-being of individuals with Down syndrome and dementia: a randomized single case series experiment (p. 321) LANGDON, Peter	Parents on the outside –A pilot study of a support group for parents with cognitive limitations who have lost the care of their children (p. 356) JANESLÄTT, Gunnel	Inclusion in research on employment: The voices of adults with Intellectual Disability (p. 350) PAHL, Jenny
A Study about the Experiences and Support for Couples with Intellectual Disabilities in Japan (p. 355) NAGAOKA, Emiko	Exploring carers' experience of end of life for people with intellectual disabilities as they age (p. 370) O' FARRELL, Janet	Support to co-residents of people with dementia and intellectual disability in group homes (p. 321) LINDMEIER, Bettina	Parents' perceptions of taking part in Parenting Young Children - a parenting program for parents with intellectual disability (p. 356) STARKE, Mikaela	Inclusive research with people with intellectual disability: the Question-Aires way (p. 350) WILLIAMS, Ruth
	When aging in place is no longer viable - Transitions to a higher support home for persons with an intellectual disability and dementia (p. 370) DUNNE, Pamela	Antidepressants increased longevity and delayed onset of dementia in adults with Down syndrome (p. 321) TSIOURIS, John		

14:30-16:00				
HS32	ERS	HS23	HS27	HS28
3.3 HEALTH Moderator: David Felce	3.11 HEALTH Moderator: Malin Broberg	3.5 LAW Moderator: Maurice Feldman	3.3 LAW Moderator: Jayne Clapton	3.3 PART Moderator: Ivan Brown
Evaluation of the World Health Organization mental health gap programme on people with disorders of intellectual development: the Sri Lanka experience (p. 319) COORAY, Sherva Elizabeth	The Life Stories of Families with Children with Intellectual Disability: What issues do they face in Croatia? (p. 323) LISAK, Natalija	Being a mother with intellectual disability in Maltese society: do you have what it takes? (p. 337) AZZOPARDI LANE, Claire	Building a profile of children and young people with intellectual disabilities in public care in Northern Ireland (p. 336) KELLY, Berni	Bio-psychological, family and school factors in childhood as predictors of adult success and quality of life of persons with borderline IQ (p. 368) FIRKOWSKA-MANKIEWICZ, Anna
The views and experiences of family carers and students who participate in a Family Placement Scheme as part of experiential learning in intellectual disability nursing education in Scotland, UK (p. 319) FINLAYSON, Janet	Factors associated with the psychological wellbeing among parents of young children with developmental disabilities attending early intervention programs in Singapore (p. 323) POON, Kenneth	Pseudoscientific Measures and Practices in Appellate Level and Higher Child Welfare Cases involving Parents with ID (p. 337) FELDMAN, Maurice	Sexual Abuse of Children with a Mild Intellectual Disability in the Netherlands (p. 336) MOONEN, Xavier	Youth and adults with intellectual and developmental disabilities: their own perceptions about their quality of life (p. 368) VEGA, Vanessa
An exploration of the Irish intellectual disability nursing profession's opinions as to the potential future shape of professional curricula in 21st century Ireland (p. 319) KEENAN, Paul	Hope, optimism and resilience in a group of parents of children with disability (p. 323) SANTILLI, Sara	Parents with intellectual disabilities and the fight to retain and sometimes gain custody of their own children (p. 337) SIGURJÓNSDÓTTIR, Hanna	Law of diminishing returns: what happens when people with ID need legal advice? (p. 336) SWIFT, Paul	Empowerment of self-determination (p. 368) WIESE, Ad
		Access to specialized victim support services for women with disabilities who have experienced violence (p.378) MANDL, Sabine	Having their say! Children and young people with intellectual disabilities who live in public care in Northern Ireland (p. 349) DOWLING, Sandra	

14:30-16:00				
KF	HS21	HS A	HS B	HS16
3.4 INC Moderator: Eva Schramml	3.7 LIV Moderator: Fabrizio Fea	3.15 HEALTH Moderator: Jane McCarthy	3.2 DEMOS Moderator: Matt Hoghton	3.7 RT Challenges in Health Surveillance
I'm getting older – my contribution to society BRUCKMÜLLER, Maria	Support staff views of the futures of adults with intellectual disability (p. 352) CUSKELLY, Monica	Inclusion in Diagnostics/ Health Care: A multiprofessional approach for diagnosing autism in adults with intellectual disabilities (p. 325) BERGMANN, Thomas	Health competence training for people with intellectual disabilities (p. 375) BREHMER-RINDERER, Barbara	Participants: EMERSON, Eric OUELLETTE-KUNTZ, Hélène, HATTON, Chris GLOVER, Gyles (p. 378)
Health in the age of people with learning disabilities ELLENBOGEN, Harald	Interactions between people with intellectual disabilities and staff in residential housing (p. 352) RØGESKOV, Maria	Diagnosing autism in people with multiple disabilities: introducing a new instrument (p. 325) DE VAAN, Gitta	Findings of an inquiry into deaths of people with ID: academics and people with ID working together to disseminate findings through film (p. 375) MARRIOTT, Anna	
Parents with Intellectual Disabilities-European Family Set ILLKOW, Johanna	The effort of direct support professionals towards (reversed) integration (p. 352) VENEMA, Eleonora	Factors Predicting Social Dysfunction in People with Autism: A Multiple Mediation Model Approach (p. 326) LUNDQVIST, Lars-Olov	Improving Health care through Twitter Chats (p. 375) MARSDEN, Daniel	
	The nature, extent and role of practice leadership for staff teams supporting people with intellectual disability (p. 352) BIGBY, Christine	Predictors of challenging Behavior among specialist mental health service users with intellectual disability and autism (p. 326) UNDERWOOD, Lisa		

16:00-16:15
Break

16:15-17:45				
AM	HS33	HS34	HS7	HS31
3.6 LAW Moderator: Glynis Murphy	3.4 LIV Moderator: Christine Linehan	3.12 HEALTH Moderator: Bea Maes	3.8 LIV Moderator: Hélène Ouellette-Kuntz.	3.13 LIV Moderator: Julie Beadle-Brown
The crime of domestic violence: the attitudes and practices of professionals who support women with intellectual and developmental disabilities (p. 338) MCCARTHY, Michelle	Aided AAC service provision: Focusing on South Korea's Assistive Technology Center Pilot Project 2009-2012 (p. 350) KOH, Mi-Seon	Study Of Cardiac Risk Parameters In Adult Persons With Down Syndrome (p. 324) CONDOLUCI, Claudia	Support Needs Predict Funding Need Better Than Adaptive Behavior (p. 352) ARNOLD, Samuel	Knowledge that counts: the struggle between professional and performative perspectives on encounters between neighbors with and without ID (p. 355) BOS, Gustaaf
The crime of domestic violence: what women with intellectual and developmental disabilities say about their abusive relationships (p. 338) MCCARTHY, Michelle	Using Conversations to Bring About Change Within the Service System: A Blueprint for Redesign and Transformation (p. 350) O'BRIEN, Patricia	Evaluation of fine movements in persons with Down syndrome (p. 323) CONDOLUCI, Claudia	Individual support planning: bridging the gap between policy and practice (p. 352) HERPS, Marjolein	Organized solidarity. Contact between people with intellectual and mental disabilities and neighbors. (p. 356) BREDEWOLD, Femmianne
Analysis of Quality of Life of People with Intellectual Disability in Community in Cornwall UK Two and Eight Years Post Institutional Abuse and Mistreatment (p. 338) SHANKAR, Rohit	Evaluation of the impact of a service-learning project on students with intellectual disabilities (p. 350) TENG, J.	The Preservation of Dignity at End-of-Life (p. 324) REILLY, Evelyn	This Is How I Do!: A person-centered self-assessment tool of describing support needs in life (p. 353) RAJALAHTI, Aarne	Supporting decision making through the implementation of health-related accessible information (p. 356) MANDER, Clare
Abuse prevention: Building ethical and respectful cultures in group homes (p. 337) WILSON, Nathan	Use of technology by adults with intellectual disability (p. 350) TOD, Courtney	Identifying good practice in relation to palliative care for people with intellectual disabilities: examples from 14 European countries (p. 324) TUFFREY-WIJNE, Irene	Professional Participation Planning through Counselling Centers in the Rhineland/Germany: requirements, forms of implementation and perspectives (p. 353) WEBER, Erik	If "Good information is the basis for genuine shared decision making DoH 2010 – why aren't we doing it? (p. 356) WAIGHT, Mary

16:15-17:45				
HS32	ERS	HS23	HS 27	HS28
3.16 HEALTH Moderator: Roger Stancliffe	3.4 HEALTH Moderator: Philip Dodd	3.4 LAW Moderator: Jo Watson	3.8 PART Moderation: Maria Dinold	3.4 PART Moderator: Keith McVilly
Developing Guided Self Help packages for people with intellectual disability (p. 326) CHAPLIN, Eddie	Suicidality in people with intellectual disabilities: A Systematic Review (p. 319) DODD, Philip	What do we mean by 'choice' and 'independence'? A critique of the implementation of the UK policy of 'personalization' in services for people with intellectual disability (p. 336) FYSON, Rachel	Retirement from mainstream employment: older workers with intellectual disabilities and their plans for life after work (p. 370) BROTHERTON, Michelle	An exploration of mutual caring relationships involving individuals with intellectual disabilities (p. 368) PARR, Angharad
Functional walking capacity following participation in a physical activity and exercise intervention (p. 326) LANTE, Kerrie	IDS-TILDA Wave II: First report of mental health variables (p. 320) MULRYAN, Niamh	Adults with intellectual disabilities: Living independently in China (p. 336) LI, Jing	Life expectancy of persons with intellectual disabilities in Germany estimated by exponential regression (p. 370) DIECKMANN, Friedrich	Considering weak interests: participative practice in social planning strategies with persons with intellectual disabilities (p. 368) SCHÄPER, Sabine
Psychosocial outcomes following participation in a physical activity and exercise intervention (p. 326) STANCLIFFE, Roger	Surveillance study of the Japanese child developmental support center for children below school age (p. 320) YAMANE, KIYOKO	UNCRPD Article 12 'Equal recognition before the law': Are we ready to uphold it for all Australians, including those rarely heard those with severe to profound intellectual disability? (p. 337) WATSON, Jo	Looking at ageing and retirement options for adults with intellectual disabilities (p. 370) HANNA-TRAINOR, Lisa	Self-determination from the conception of youth and adults with intellectual or developmental disabilities (p. 368) VEGA, Vanessa
The feasibility and reliability of physical fitness tests in children with a moderate to severe intellectual disability (p. 326) WOUTERS, Marieke		Legal definitions of intellectual disability: do they work? (p. 337) WHITAKER, Simon	Development of a support program for relatives of seniors with intellectual disabilities in Norway (p. 370) LARSEN, Frode	Supporting volunteering activities by Swiss adults with intellectual disabilities (p. 368) WICKI, Monika Theresa

16:15-17:45	
KF	HS21
INC RT Moderator: Albert Brandstätter	3.9 LIV Moderator: David McConnell
Community Based Living BRUNNER, Klaus SCHELLHORN, Heinrich BLOK, Nicolette DRIESSEN, Thomas HEINDORF, Ingrid	The Relationship Between Autism Services and Mothers' Wellbeing (p. 353) HODGETTS, Sandra
	"A place where it's ok to have some peculiar things at home": Siblings' definition of sibling support (p. 353) MOYSON, Tinneke
	Mutual support: an exploration of the role of adults with intellectual disabilities (ID) caring for their older family carers (p. 353) TRUESDALE-KENNEDY, Maria

17:45-18:00
Break

18:00-18:45
Keynote Speaker: Dr. Laurence Taggart Health promotion and healthcare for people with intellectual disabilities Location: AM (p. 290)

18:45-19:30
Closing Ceremony (Location: AM)

Poster Presentations W&E, EDU 13:30-14:30 Location: ARK		
Number	Presenter	Title
1	BIELAWSKA, Marta	Areas of Competence of Future Teachers Developed within Teacher Education Programs Towards Inclusive Education in Poland (p. 381)
2	CEDERLOF, Christina	How Does Using Mainstream Technology Impact the Learning of Practical Academic Skills in Adults with Intellectual and Developmental Disabilities? (p. 381)
3	DEBÈ, Anna	What Kind of Teacher for What Kind of School? "Special" Teachers and the Pathways to Inclusion in Italy during the 20th Century (p. 381)
4	DIND, Juliane	Identifying the Expressions of Ecological Self-awareness in Children with Profound Intellectual and Multiple Disability: Development of a Setting of Experimental and Natural Situations (p. 381)
5	GESHI, Yuri	An Investigation into the Present Conditions and Problems Associated with Sheltered Workshops for People with ID (p. 399)
6	GÓMEZ-VELA, María	The Influence of Participation on Quality of Life of Students with Special Educational Needs (p. 381)
7	GÓMEZ-VELA, María	The Role of Educational Context on Self-determination of Students with Intellectual Disability (p. 381)
8	GÓMEZ-VELA, María	Determinant Factors of Quality of Life of Students with Special Educational Needs - The role of Resilience
9	HASHIMOTO, Suzuyo	A Cross-cultural Comparison of Inclusive Education in Japan and Italy (p. 382)
10	HEO, D.H.	The Experience and Meaning of Special Education Teachers who Teach in Integrated Stronghold Vocational Schools (p. 382)
11	HETTIARACHCHI, Shyamani	The Use of Colorful Semantics to Enhance Narrative Skills in Children with Intellectual Impairment (p. 382)
12	HOFER, Gerhart	The Next Logical Step or Still a Revolution? Educating Adults with ID to become Social Care Helpers in the Disability Field (p. 382)
13	JISUN, Lee	Trend of Video Modeling Studies for children with Developmental Disabilities (p. 382)
14	KADASTIK, Jana	Evaluating the User Experience of Learning Tools with a Focus on the Pupils with Profound Intellectual and Multiple Disabilities (p. 382)
15	KADO, Yoko	Examining Executive Function in Children with Autism with Comorbid ADHD using the Wisconsin Card Sorting Test (p. 383)
16	KOBAYASHI, Iwao	Educational Use of a Tablet PC by a Student with Multiple Disabilities (p. 383)
17	KOCMAN, Andreas	From "Work" to "Work Satisfaction: Towards a Model of Work Satisfaction in ID Research (p. 383)
18	KWEK, Christine	Understanding Factors Influencing Challenging Behaviors among Children with Autism Spectrum Disorders (ASD) and Multiple Disabilities (MD) (p. 383)
19	LEE, Weonhee	A Study on Experience of Parents for the Transition to Middle School of Students with Autism Spectrum Disorder (p. 383)
20	MEEK, Andrea	Evaluation of the Inclusion of Teenagers and Young Adults with ID within the Real Opportunities Project in Wales (p. 399)
21	MOLTENI, Paola	The Impact of Sensory Issues on Children on the Autism Spectrum in Mainstream Classrooms: Teachers' Perspectives and Training Needs (p. 383)
22	MOROOKA, Teruko	Differences in Behavioral Evaluations for Boys with ADHD and/or PDD between Parents and Teachers with Reference to the Child's Age (p. 383)
23	MOY, Eloïse	Handwriting in Children and Adults with Down Syndrome: Is My Handwriting so Different? (p. 383)
24	ODAKA, Kunio	Physical Exercise Program Using Tablet PCs for Maintaining Exercise Volume in Students with Intellectual Disabilities (p. 384)
25	POON, Kenneth	The Effectiveness of the T. Jacket for Children with Autism Spectrum Disorders (p. 384)
26	RYAN, Susan	The Inclusive College Experience: Benefits, Challenges and Outcomes Experienced by Students with IDD (p. 384)
27	SAITO, Masahide	The Effect of Contact Frequency to People with Intellectual Disabilities on Attitudes (p. 384)
28	SCHMIDT KRAJNC, Majda	Self-concept of Pupils with Learning/Intellectual Disabilities in Regular Primary School (p. 384)
29	SENTONES, Alce	A Support System for Differently-Abled Learners in General Education (p. 384)
30	SHIVERS, Carolyn	Literacy and Numeracy in an Aging Population of Individuals with Intellectual and Developmental Disabilities (p. 384)
31	SZUMSKI, Grzegorz	The Socio-economic Status of Parents and Access to Inclusive Education for Children with Mild Intellectual Disabilities (p. 385)

Poster Presentations W&E, EDU		
32	TAKANO, Miyuki	Trial Production of Japanese-Version Multi-sensory Stories for Children with Profound Intellectual and Multiple Disabilities (p. 385)
33	JANESLÄTT, Gunnel	Evaluation of a New Method to Remediate Time Processing Ability in Children with Intellectual Disability (ID) in Special Schools (p. 385)
34	YAMANE, Kiyoko	The Support for Autistic Child's Unbalanced Diet (p. 385)
35	ZAPPELLA, Emanuela	A good Enough Job: The Path to Workplace Inclusion in Small and Medium-sized Companies in Italy (p.399)

Oral Presentations and Demonstrations

Each presentation or demonstration takes 15 minutes, followed by a 5 five-minute break, in which the technical equipment should be prepared, such as changing the Computer or installing your USB drive. There will be the possibility to connect your own computer as well as using a computer provided from the University of Vienna. Please note that the duration mentioned above is the maximum duration for each presentation.

Poster Presentations

A space for your poster and adhesive tape or pins to fix your poster, will be provided. However to avoid complications please bring some extra tape. The standard size for congress posters is DIN A0 (841 x 1189 mm).

Date	Mounting	Presentation	Removal
Tuesday, 15 th July	13:30 – 14:00	14:00 – 15:00	15:00 – 15:10
Wednesday, 16 th July	13:30 – 14:00	14:00 – 15:00	15:00 – 15:10
Thursday, 17 th July	13:00 – 13:30	13:30 – 14:30	14:30 – 14:40

Please make sure that your poster is removed quickly. Keynote presentations take place right after the poster presentations!

Roundtables

Each roundtable takes 90 minutes. Any exceptions are listed in the program. Posters are designed to encourage discussions, and should have a minimum of 4 and maximum of 5 presenters, including a chair.

Practical Information

Arrival on the Airport and Transfer to City Center

For further information please visit: <http://iassidd2014.univie.ac.at/venue/how-to-get-there/>

Austria Area Code

Use Austrian's country code 0043 and miss out the 0 in front of the number you wish to call.

Mobile Phones

Please make sure that your electronic devices are set to silent during all events of the congress.

Name Badge

For security purposes, every participant must wear his name badges visible at all times during the Congress. It is not allowed to enter the session rooms without the badge. Replacement of lost name badges can be requested at the Registration Desk.

Public Transportation

Vienna's public transport is well organized. Check out the underground, the tram and the bus at: www.wienerlinien.at. The University of Vienna is located next to the metro stop *Schottentor*, which is situated on the U2 metro line.

Registration & Information Desk

The registration will be located in the entrance hall (AU) of the University of Vienna. Upon registration you will receive a name badge and a bag, which contains the program book, the JARID issue with all congress abstracts, the easy-to-read abstract book (just for self-advocates), the access information concerning WLAN and also some information about Vienna. The local daily registration can be completed at the registration desk. If there are any upcoming questions, please do not hesitate to seek assistance there.

Opening hours are:

Monday	09:00-17:30
Tuesday	09:00-19:00
Wednesday	09:00-19:00
Thursday	09:00-19:00

Social Program

For detailed information about the social program please visit:
<http://iassidd2014.univie.ac.at/participate/social-events/>

Restaurants

You will find a list of recommended restaurants in the area of the venue in your welcome bag.

For super markets see the list below:

Billa	Universitaetsstrasse 6-8, 1090 Wien	MO-FR 7.15-19.30	SA 7.15-18.00
Billa	Alser Strasse 4, 1090 Wien	MO-FR 7.15-19.30	SA 7.15-18.00
Spar	Schottengasse 7, 1010 Wien	MO-FR 7.25-20:00	SA 9.00-18.00

Taxi Information

Phone: 40100
Phone: 31300
Phone: 60160

Pharmacies

Apotheke zur Universität, Universitätsstraße 10, 1090 Wien-Alsergrund
Tiger-Apotheke, Alser Straße 12, 1090 Wien-Alsergrund

Monday, 14th July

Time	Event
08:30 - 12:00	Beautiful Vienna
12:00 - 13:30	Viennese Waltz, Location: MBS
13:30 - 14:30	Narrenturm, Location: Spitalgasse 2, 1090 Wien
17:00 - 19:00	Opening Ceremony, Location: AM
19:00 - 20:00	Welcome Drink, Location ARK

Schedule Opening Ceremony

Moderation: Germain Weber, Chair of the Local Organization Committee

- Opening address Heinz W. Engl, Rector of the University of Vienna
- Dance performance inclusive dance company "Ich bin Okay"
- Opening address Vianne Timmons, President of IASSIDD
- Opening address Klaus Lachwitz, President of Inclusion International
- Dance performance inclusive dance company "Ich bin Okay"
- Opening address Rudolf Hundstorfer, Federal Minister of Labor, Social Affairs and Consumer Protection
- Opening address Senada Halicevic, Chairperson of the European Platform of Self-Advocates
- Sparkling wine and snacks in the Arcades

Tuesday, 15th July

Time	Event
20:00	Reception at the City Hall, Location: Friedrich-Schmidt-Platz 1, 1010 Wien

Wednesday, 16th July

Time	Event
18:00 - 19:30	Anniversary Event, Location: AM
19:30	Anniversary Gala Dinner, Location: Kuppelsaal, Technical University of Vienna, Karlsplatz 13, 1040 Wien Not included in the congress fee, to be booked separately til Thursday 10th July. (€ 85,-)

Schedule Anniversary Event

Moderation: Germain Weber, Chair of the Local Organization Committee

- Opening address Germain Weber, Chair of the Local Organization Committee
- String orchestra of the "Chorus & Orchestra of the University of Vienna"
- Anniversary address by Vianne Timmons, President of IASSIDD
- Anniversary address Trevor Parmenter, Past President of IASSIDD
- Inclusive concert "MC Ron"
- Cake and sparkling wine in the Arcades

Schedule Anniversary Gala Dinner

Moderation: Brigitte Lueger-Schuster, Co-Chair of the Local Organization Committee

- Pre-dinner drink accompanied by jazz music of the "Chorus & Orchestra of the University of Vienna"
- Opening address Brigitte Lueger-Schuster, Co-Chair of the Local Organization Committee
- Dinner
- Jazz music of the "Chorus & Orchestra of the University of Vienna"
- Inclusive salon music band "Hausmusik der Lebenshilfe Hartberg": asks for a dance!

Thursday, 17th July

Time	Event
18:45 - 19:30	Closing Ceremony, Location: AM

Schedule Closing Ceremony

Moderation: Germain Weber, Chair of the Local Organization Committee

- Closing address Harald Ellbogen, Self-Advocate of the Lebenshilfe Niederösterreich
- Address Philip W. Davidson, Chair of the Chair of the Organization Committee of the IASSIDD World Congress 2016
- Closing address Brigitte Lueger-Schuster and Germain Weber, Co-Chair and Chair of the Local Organization Committee

Friday, 18th July

Time	Event
12:00 - 13:30	Viennese Waltz; Location: MBS
14:00 - 15:00	Narrenturm; Location: Spitalgasse 2, 1090 Wien

Internet Access Guide

In order to use the eduroam guide you need to have a WLAN-able device (computer, mobile phone, tablet, etc.). If you can separately activate the WLAN function on your laptop, please make sure it is activated. Additionally you must be within reach of our access points.

Eduroam offers a safe internet access using WLAN within the University buildings and around these buildings as well as in the Sigmund Freud Parc, located across the street from the University, direction Votiv Cathedral and Hotel Regina. Both the authentication and the data transfer are coded so that any unauthorized access is not possible. If the device is within range of the access points of the University of Vienna, it will connect automatically with the internet. In comparison to the u:connect network, which is not coded, the configuration is a little more complex.

Follow these steps for configuration

1. Search for the network connection on your device
2. Choose eduroam and click connect
3. You will be asked for your username and your password
 - Your username and password are noted on the information card in your welcome bag
 - Use your username in combination with @univie.ac.at -> username@univie.ac.at
 - Click OK
4. Your connection should be working now

Additional Information

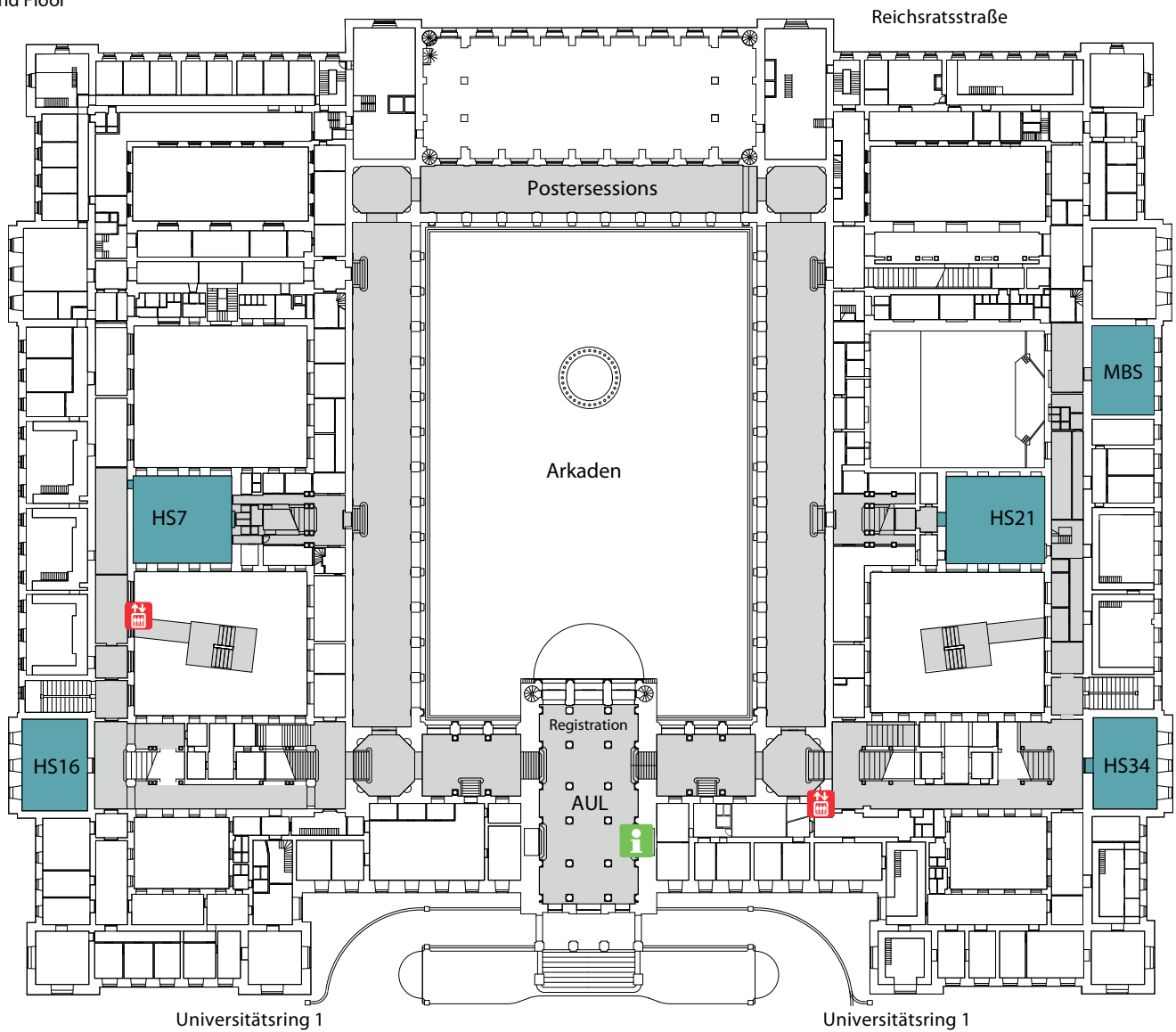
Older versions of MAC operating system do not work with eduroam. Please use the u:connect network.

The account is valid during the congress days.

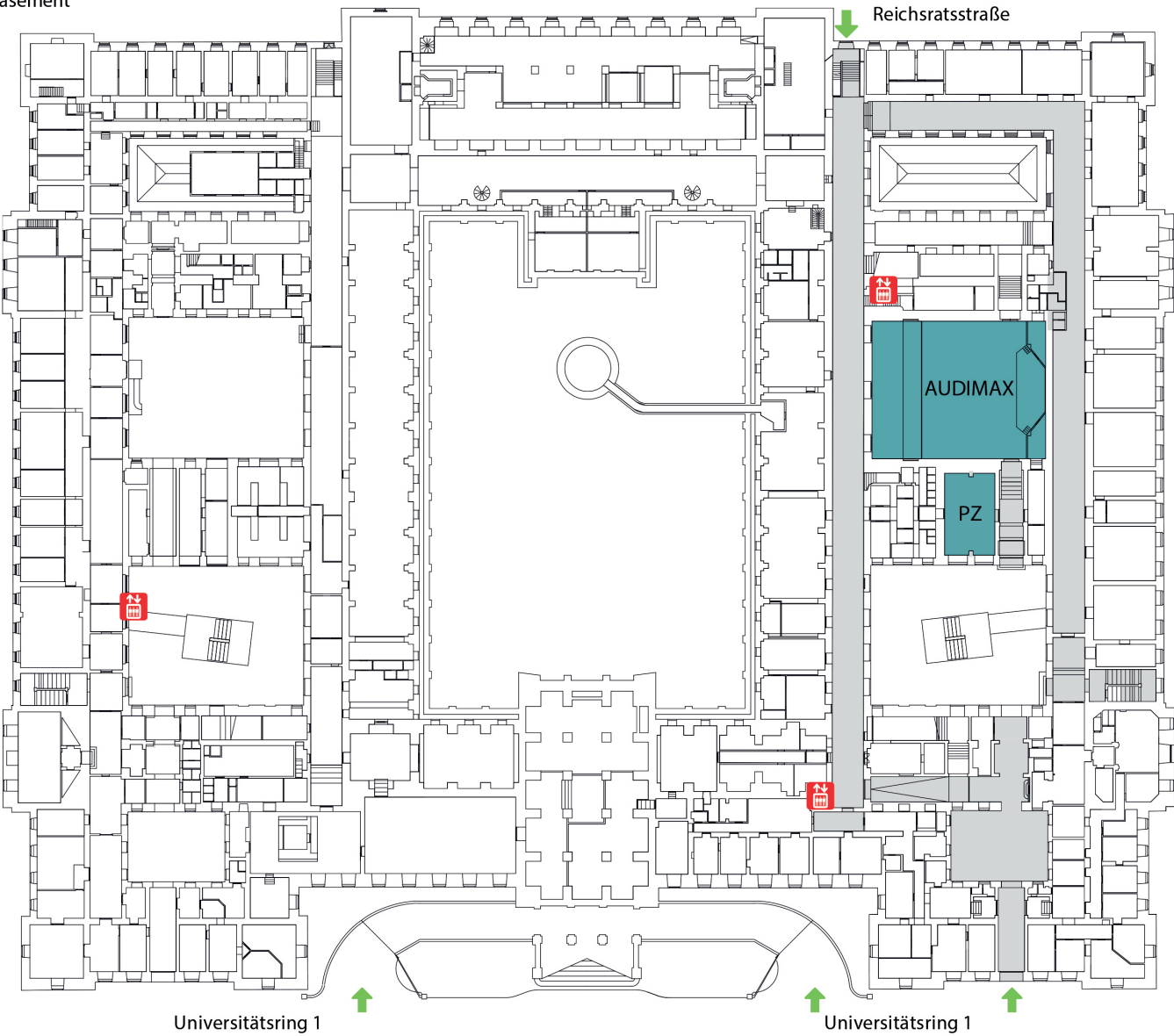
If there are any upcoming questions, please do not hesitate to seek assistance at the information desk

Main Building [MB HP]

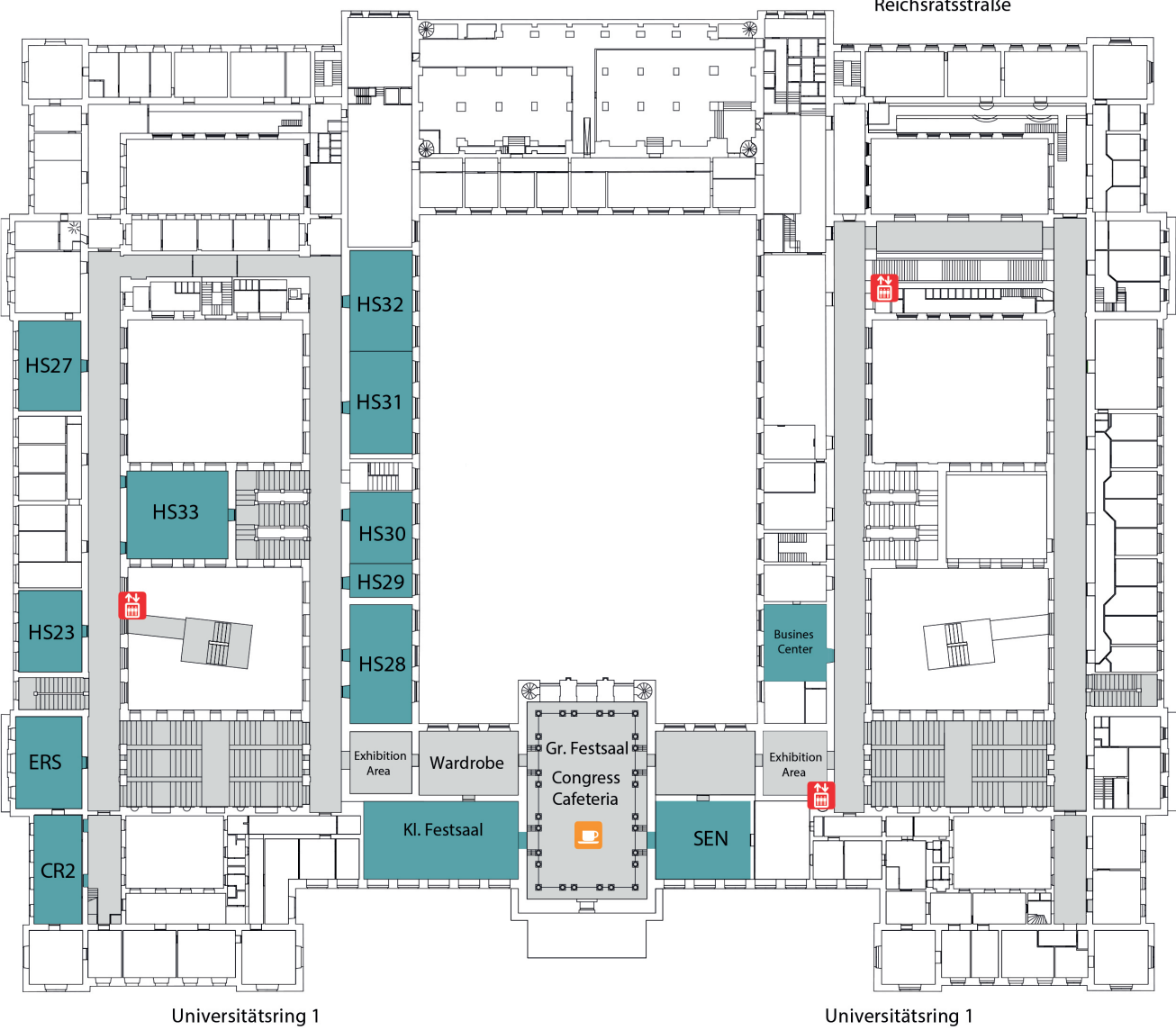
Ground Floor



Main Building [MB TP]
Basement



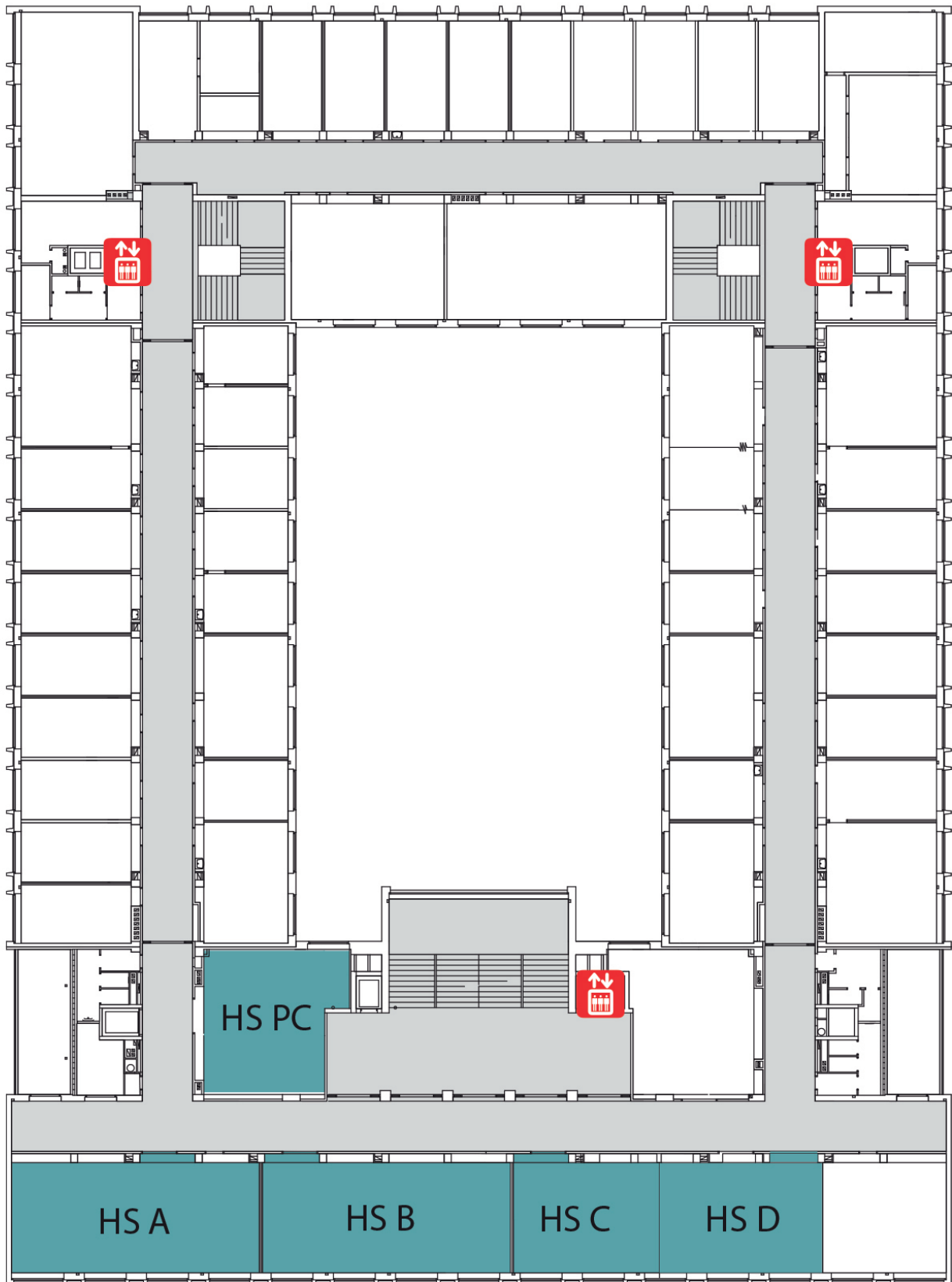
Main Building [MB 01]
1st Floor



Neues Institutsgebäude [NIG 06]

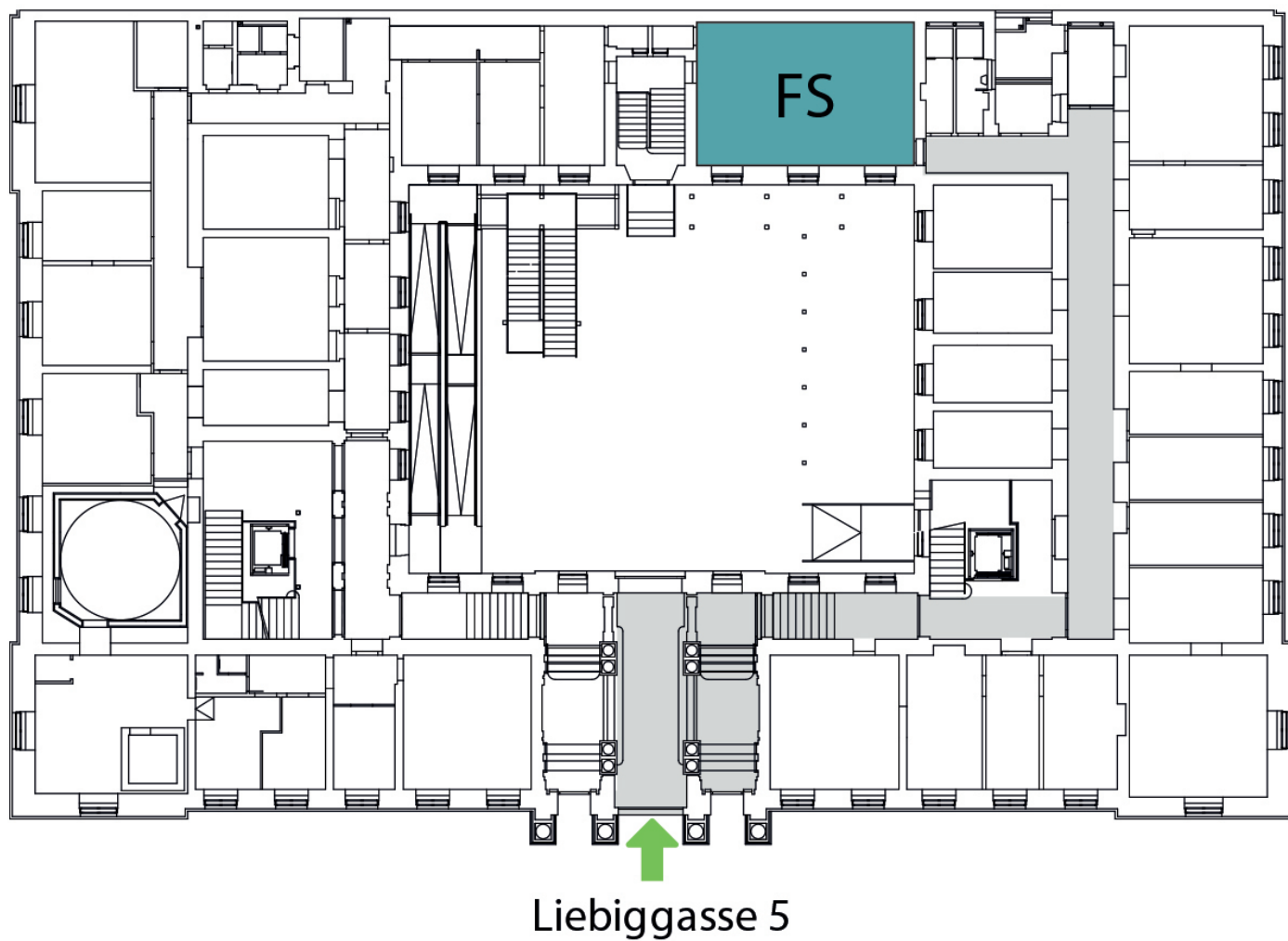
6th Floor

Liebiggasse



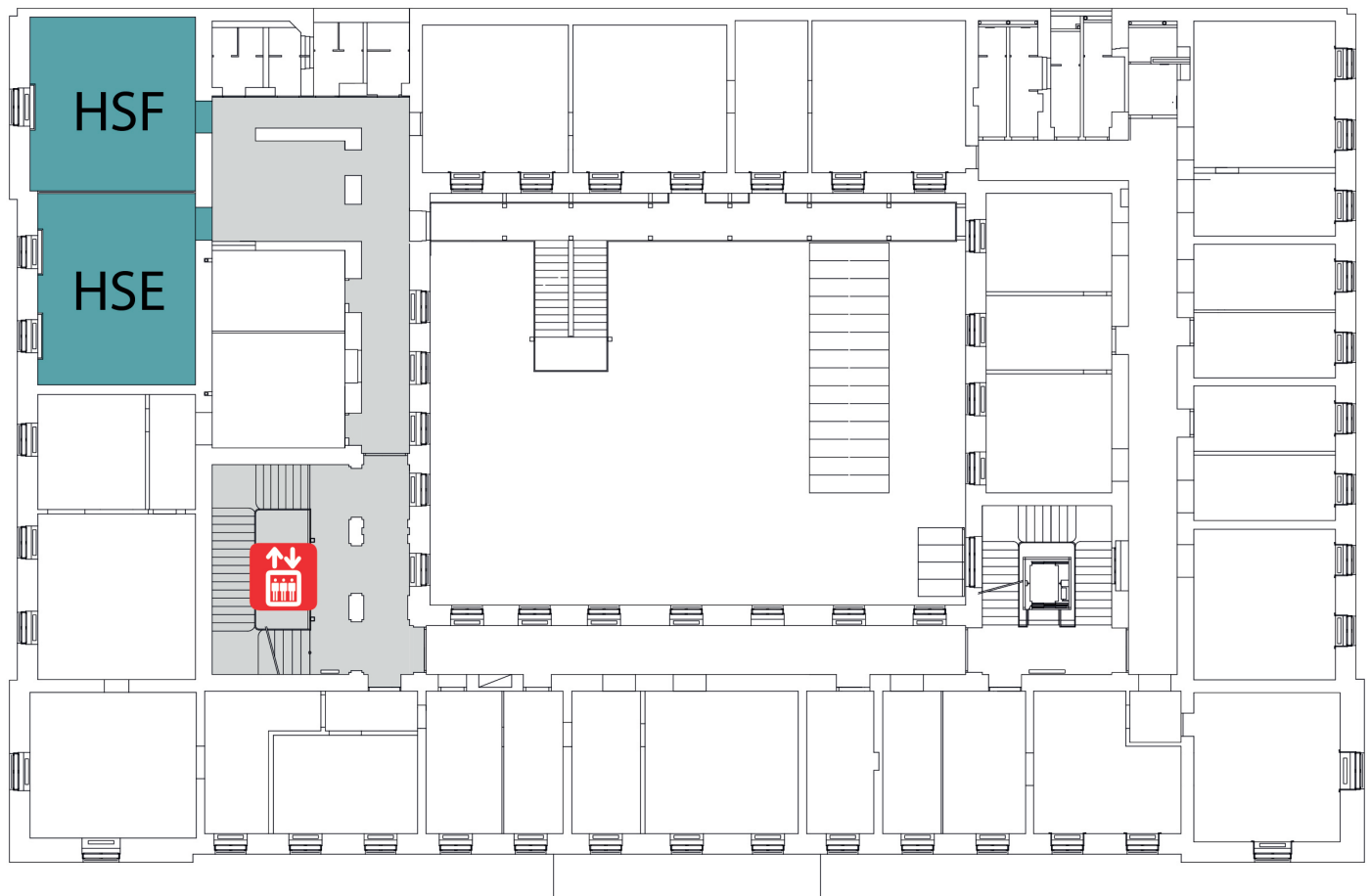
Faculty of Psychology [FPY GF]

Ground Floor



Faculty of Psychology [FPY 01]

1st Floor



Liebiggasse 5

